

Fetch Configuration

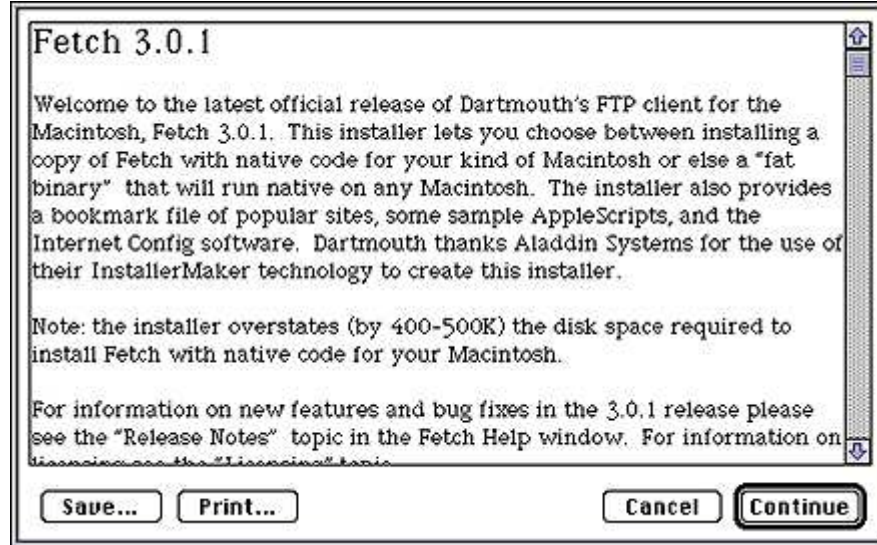
Support Pages

Fetch Configuration for the Macintosh

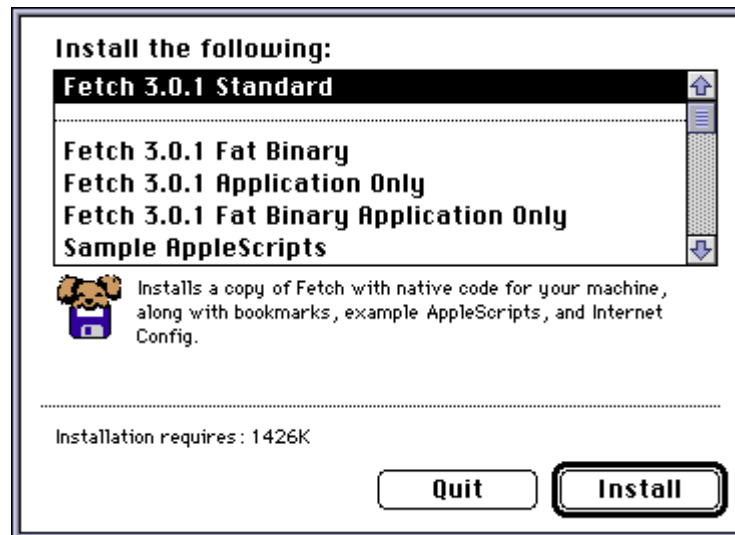
Installation

Double-click the Fetch 3.0.1 Installer.

Read the Fetch 3.01 Read Me file and click Continue.



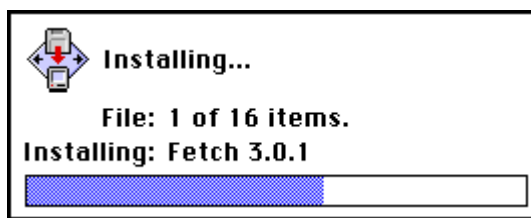
Click Install.



Click Desktop.

Click Install.

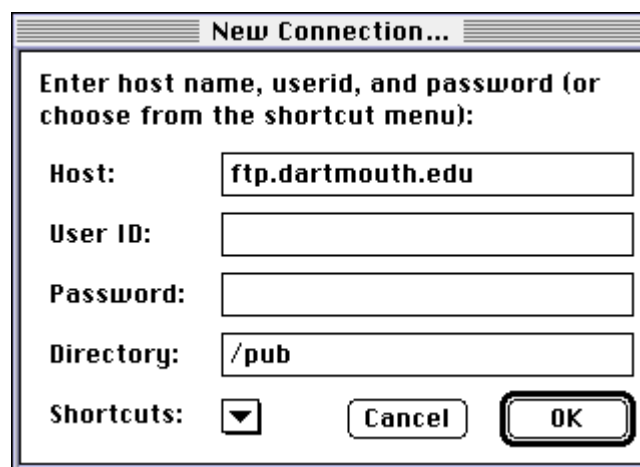




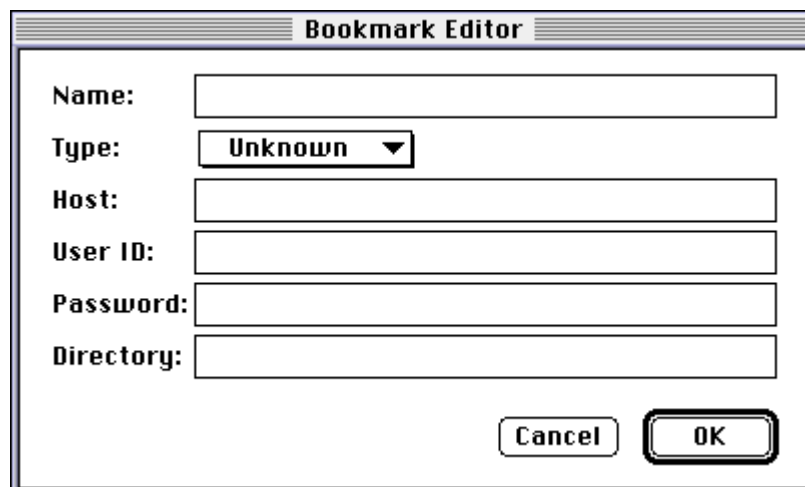
Configure

Double-click the Fetch 3.0.1 icon.

Click Cancel.



On the menu bar, click Customize and select New Shortcut.



In the **Name** field, type My Webpage.

In the **Type** field, select Unknown.

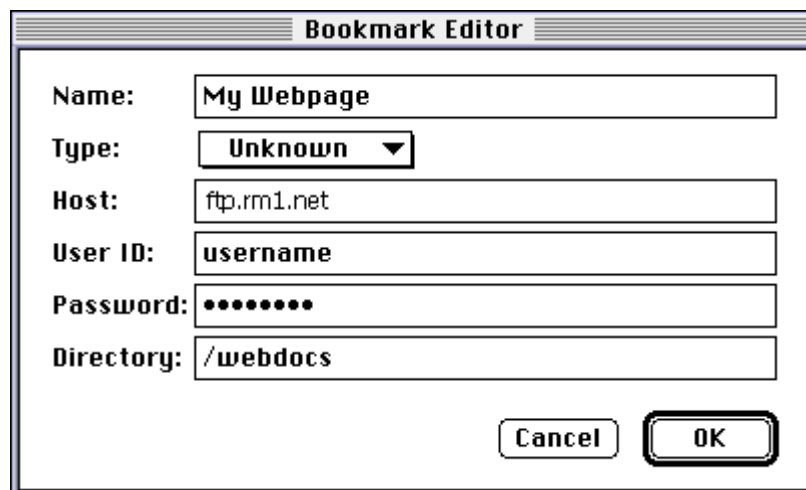
In the **Host** field, type www.wzrd.com.

In the **User ID** field, type your username.

In the **Password** field, type your Password.

For the **Directory** field, type /.

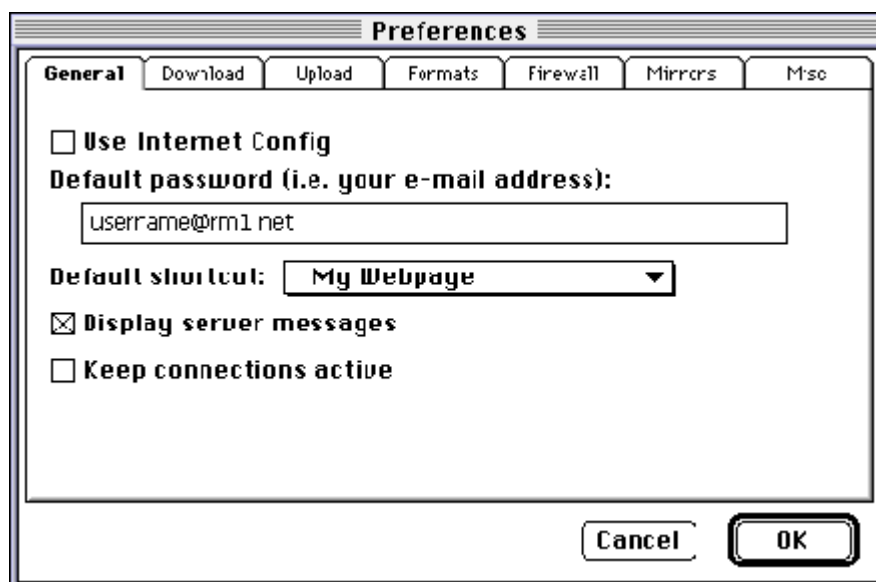
Click OK.



On the menu bar, click Customize and select Preferences.

Select the General tab.

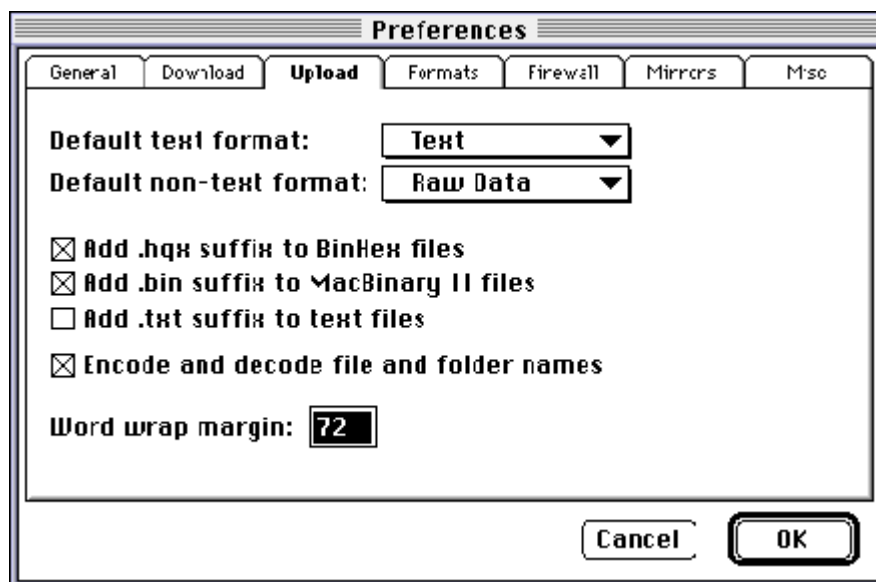
In the **Default password area**, type your username@wzrd.com.



Click OK.

Select the Upload tab.

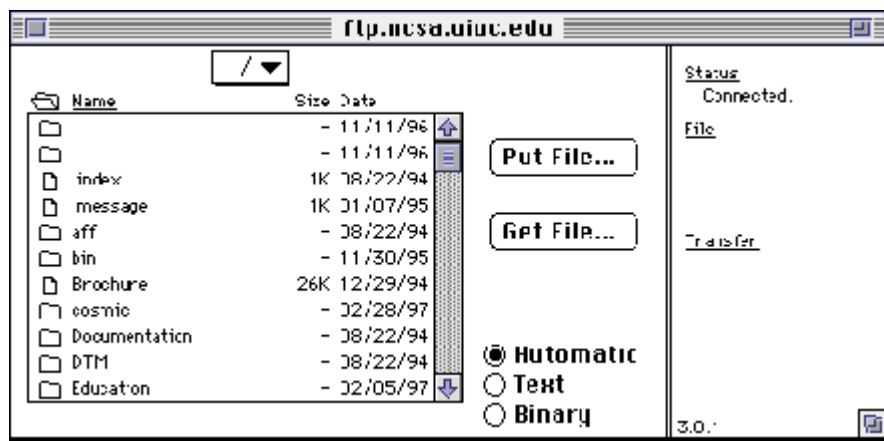
in the **Default non-text format field** select Raw Data.



Click OK.

When you are ready to connect go to the menu bar, click File and select New Connection.

Select a location and fetch will connect.



Congratulations!
You have successfully setup Fetch