



P.A.R.I.S.

West Valley College

Student Counts

Accounting

	Spring 2006	Fall 2006	Spring 2007	Fall 2007
Enrollment*	311	303	327	347
Headcount**	272	251	278	300

Chosen Parameters :

from pa_stu_char_dept where o_college = 'WV' and course_dept in ('ACCTG') and term in ('2007','20075','20073','20067','20065','20063') group by o_college, term

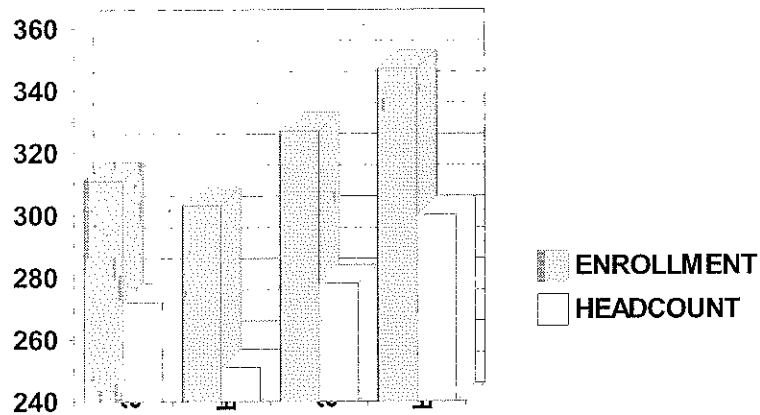
Notes : * Enrollment is a "seat count" and shows the number of "warm bodies" filling classrooms. This is the appropriate value to use when describing enrollment activity.

** Headcount is an unduplicated count of students. A student taking two different classes is counted only once. Used as the denominator in deriving ethnic, gender, and age distributions.

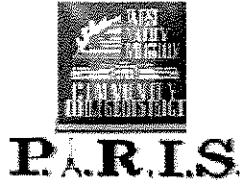
This report shows student and overall enrollment counts only for the students enrolled at first census (approx. 4th week) (i.e., counts do not include those students enrolling after the first census date).

Source : WVMCCD data measured at First census

Student Counts



Semester



West Valley College
Student Demographics
(Gender, Age and Units Enrolled)

ACCOUNTING

	Spring 2006	Fall 2006	Spring 2007	Fall 2007
Headcount (#)	272	251	278	300

Gender (%)		Spring 2006	Fall 2006	Spring 2007	Fall 2007
Female		47.2%	54.2%	54.9%	53.9%
Male		52.8%	45.8%	45.1%	46.1%

Age (%)		Spring 2006	Fall 2006	Spring 2007	Fall 2007
< 21		37.1%	40.6%	38.8%	40.3%
21 - 25		35.7%	33.1%	33.1%	32.3%
26 - 30		8.5%	6.8%	7.9%	7.7%
31 - 40		8.1%	9.2%	10.4%	9.7%
41 - 50		7.0%	4.4%	6.8%	7.7%
51 - 60		2.6%	4.8%	2.5%	2.0%
> 60		1.1%	1.2%	0.4%	0.3%

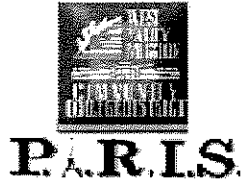
		Units Enrolled (%)			
	3 or less	5.9%	6.8%	5.4%	5.0%
PT	3.5 - 6.0	14.0%	11.6%	12.6%	16.0%
	6.5 - 11.5	23.5%	23.5%	21.2%	23.7%
FT	12 or more	56.6%	58.2%	60.8%	55.3%

Chosen Paramters:

from pa_stu_char_dept where o_college = 'WV' and course_dept in ('ACCTG') and term in ('20077','20075','20073','20067','20065','2006

Notes: This report shows student characteristics only for the students enrolled at first census (approx. 4th week) (i.e., headcount and distributions do not include those students enrolling after the first census date).

Source: WVMCCD data measured at First census



West Valley College

Student Characteristics (Ethnicity)

ACCOUNTING

	Spring 2005	Fall 2005	Spring 2006	Fall 2006	Spring 2007	Fall 2007	Coll. avg. F07
Headcount (#)	279	261	272	251	278	300	10,185
	%	%	%	%	%	%	%
African American	5.1%	5.6%	2.4%	3.9%	2.8%	3.7%	3.2%
American Indian	0.0%	0.4%	0.8%	0.9%	0.4%	0.0%	0.7%
Asian/Fil/Pac Isl	20.7%	22.2%	24.2%	20.0%	21.4%	19.7%	19.9%
Hispanic	12.9%	12.0%	12.9%	13.9%	13.5%	13.4%	16.7%
Other Non-White	2.3%	3.0%	4.8%	5.7%	5.2%	5.6%	2.0%
White	59.0%	56.8%	54.8%	55.7%	56.7%	57.6%	57.4%

Chosen Parameters :

from pa_stu_char_dept where o_college = 'WV' and course_dept in ('ACCTG') and term in ('20077','20075','20073','20067','20065','20063','20057','20055','20053')

Notes: This report shows the ethnicities of those students enrolled at first census (approx. 4th week) (i.e., the headcount and ethnic distributions shown do not include those students that enrolled after the first census date. See ethnicity detail report within PARIS for actual numbers of students in each ethnic cohort as well as percentages.

Ethnic distributions are derived by excluding unknown/undeclared ethnicities from the denominator.

Source: WVMCCD data measured at First census



West Valley College
Success Rate
ACCOUNTING

01/25/08

P.A.R.I.S.

	Spring 2006		Summer 2006		Fall 2006		Spring 2007	
	Total Grades	Success Rate	Total Grades	Success Rate	Total Grades	Success Rate	Total Grades	Success Rate
Total	273	69.6%	22	40.9%	252	60.3%	284	74.3%
African American	6	33.3%	1	100.0%	9	44.4%	8	50.0%
Amer. Indian/Alaskan	2	50.0%	0	0.0%	2	0.0%	1	0.0%
Asian	44	65.9%	6	16.7%	34	58.8%	42	78.6%
Filipino	7	57.1%	0	0.0%	8	87.5%	2	50.0%
Hispanic	24	50.0%	2	50.0%	25	60.0%	27	74.1%
Other Non-White	11	54.5%	2	0.0%	13	38.5%	12	75.0%
Pac-IsIndr.	0	0.0%	0	0.0%	0	0.0%	3	33.3%
White	136	75.7%	7	42.9%	126	62.7%	144	74.3%
Female	127	78.0%	11	27.3%	137	65.0%	155	78.1%
Male	143	61.5%	9	44.4%	113	54.0%	124	69.4%
<21	92	68.5%	11	36.4%	90	66.7%	88	72.7%
21 to 25	104	63.5%	9	33.3%	94	53.2%	110	73.6%
26 to 30	26	80.8%	1	100.0%	18	61.1%	24	62.5%
31 to 40	21	71.4%	1	100.0%	23	60.9%	30	76.7%
41+	30	83.3%	0	0.0%	27	63.0%	32	87.5%
College Avg.	28239	64.7%	6236	77.7%	29340	64.4%	29583	64.9%

Chosen Parameters:

from pa_grd_sum_eth_dept where o_college = 'WV' and term in ('20077','20075','20073','20067','20065','20063') and course_dept in ('ACCTG')

Notes : "Total Grades" is the total number of grades awarded (A, B, C, D, F, I, CR, NC, or W) to students in a given group (e.g., total, ethnic, gender, or age group).

"Success Rate" is the total number of A, B, C, & CR awarded divided by "Total Grades". To derive the number of success grades awarded, multiply the value in "Total Grades" by the decimal version of the percentage shown in "Success Rate" (e.g., 69.2% means that you will multiply total grades of, say, 1,500 by 0.692 to arrive at 1,023 success grades awarded.