

West Valley College Student Counts

Administration Of Justice

	Spring 2006	Fall 2006	Spring 2007	Fall 2007
Enrollment*	602	630	671	657
Headcount**	386	385	419	412

Chosen Parameters :

from pa_stu_char_dept where o_college = 'WV' and course_dept in ('AJ') and term in ('2007','20075','20073','20067','20065','20063') group by o_college, term

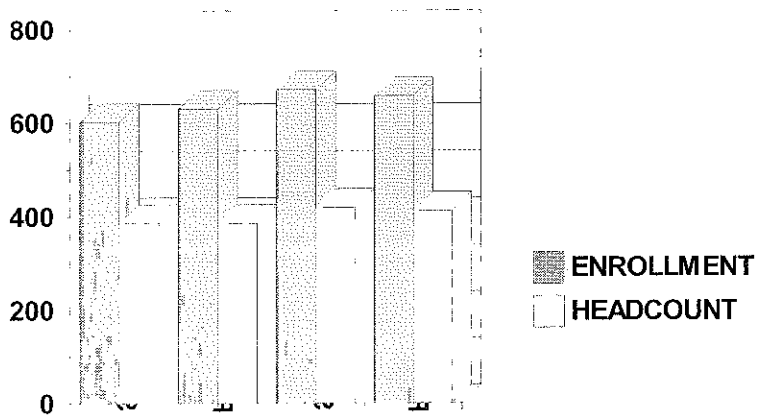
Notes : * Enrollment is a "seat count" and shows the number of "warm bodies" filling classrooms. This is the appropriate value to use when describing enrollment activity.

** Headcount is an unduplicated count of students. A student taking two different classes is counted only once. Used as the denominator in deriving ethnic, gender, and age distributions.

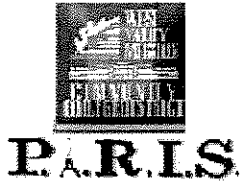
This report shows student and overall enrollment counts only for the students enrolled at first census (approx. 4th week) (i.e., counts do not include those students enrolling after the first census date).

Source : WVMCCD data measured at First census

Student Counts



Semester



West Valley College
Student Demographics
(Gender, Age and Units Enrolled)

ADMINISTRATION OF JUSTICE

	Spring 2006	Fall 2006	Spring 2007	Fall 2007
Headcount (#)	386	385	419	412

Gender (%)		Spring 2006	Fall 2006	Spring 2007	Fall 2007
Female		41.4%	43.5%	41.9%	46.4%
Male		58.6%	56.5%	58.1%	53.6%

Age (%)		Spring 2006	Fall 2006	Spring 2007	Fall 2007
< 21		48.4%	44.9%	47.0%	47.8%
21 - 25		36.3%	37.1%	37.0%	33.5%
26 - 30		4.9%	6.0%	5.7%	7.0%
31 - 40		6.5%	7.5%	6.2%	6.3%
41 - 50		2.1%	2.3%	2.4%	3.2%
51 - 60		1.3%	1.3%	1.4%	1.7%
> 60		0.5%	0.8%	0.2%	0.5%

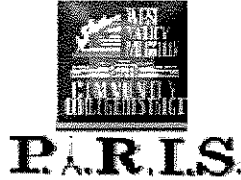
		Units Enrolled (%)			
	3 or less	10.9%	15.3%	11.2%	14.6%
PT	3.5 - 6.0	16.8%	12.5%	13.8%	12.4%
	6.5 - 11.5	21.5%	20.8%	22.2%	22.3%
FT	12 or more	50.8%	51.4%	52.7%	50.7%

Chosen Paramters:

from pa_stu_char_dept where o_college = 'WV' and course_dept in ('AJ') and term in ('20077','20075','20073','20067','20065','20063') gr

Notes: This report shows student characteristics only for the students enrolled at first census (approx. 4th week) (i.e., headcount and distributions do not include those students enrolling after the first census date).

Source: WVMCCD data measured at First census



West Valley College

Student Characteristics (Ethnicity)

ADMINISTRATION OF JUSTICE

	Spring 2005	Fall 2005	Spring 2006	Fall 2006	Spring 2007	Fall 2007	Coll. avg. F07
Headcount (#)	360	377	386	385	419	412	10,185

	%	%	%	%	%	%	%
African American	3.0%	6.6%	5.3%	4.4%	3.4%	4.6%	3.2%
American Indian	0.9%	1.8%	1.5%	1.5%	1.9%	1.6%	0.7%
Asian/Fil/Pac Isl	10.7%	9.0%	10.0%	8.3%	7.7%	7.6%	19.9%
Hispanic	22.3%	25.8%	21.8%	26.8%	25.1%	28.9%	16.7%
Other Non-White	2.7%	1.8%	1.5%	1.5%	1.9%	1.6%	2.0%
White	60.4%	55.0%	59.9%	57.5%	60.1%	55.6%	57.4%

Chosen Parameters:

from pa_stu_char_dept where o_college = 'WV' and course_dept in ('AJ') and term in ('20077','20075','20073','20067','20065','20063','20057','20055','20053')

Notes: This report shows the ethnicities of those students enrolled at first census (approx. 4th week) (i.e., the headcount and ethnic distributions shown do not include those students that enrolled after the first census date. See ethnicity detail report within PARIS for actual numbers of students in each ethnic cohort as well as percentages.

Ethnic distributions are derived by excluding unknown/undeclared ethnicities from the denominator.

Source: WVMCCD data measured at First census



West Valley College

Success Rate

ADMINISTRATION OF JUSTICE

P.A.R.I.S.

01/25/08

	Spring 2006		Summer 2006		Fall 2006		Spring 2007	
	Total Grades	Success Rate	Total Grades	Success Rate	Total Grades	Success Rate	Total Grades	Success Rate
Total	537	67.0%	394	90.9%	829	82.3%	954	82.3%
African American	32	71.9%	27	77.8%	37	81.1%	31	83.9%
Amer. Indian/Alaskan	8	62.5%	3	100.0%	8	87.5%	13	69.2%
Asian	33	78.8%	17	94.1%	34	88.2%	33	87.9%
Filipino	11	45.5%	14	100.0%	17	88.2%	19	84.2%
Hispanic	74	60.8%	68	91.2%	120	77.5%	136	73.5%
Other Non-White	6	66.7%	8	100.0%	11	63.6%	11	72.7%
Pac-Islnr.	4	0.0%	2	50.0%	7	100.0%	10	90.0%
White	271	68.6%	180	91.7%	455	84.8%	558	82.6%
Female	217	66.8%	90	82.2%	308	84.4%	287	79.1%
Male	315	67.0%	295	93.2%	507	80.7%	646	83.7%
<21	228	62.7%	40	67.5%	220	70.5%	233	70.8%
21 to 25	224	66.5%	56	78.6%	252	73.8%	278	70.1%
26 to 30	29	75.9%	67	88.1%	67	88.1%	104	93.3%
31 to 40	35	74.3%	151	98.0%	132	95.5%	160	93.8%
41+	21	95.2%	80	100.0%	158	98.7%	179	99.4%
College Avg.	28239	64.7%	6236	77.7%	29340	64.4%	29583	64.9%

Chosen Parameters:

from pa_grd_sum_eth_dept where o_college = 'WV' and term in ('20077','20075','20073','20067','20065','20063') and course_dept in ('AJ')

Notes : "Total Grades" is the total number of grades awarded (A, B, C, D, F, I, CR, NC, or W) to students in a given group (e.g., total, ethnic, gender, or age group).

"Success Rate" is the total number of A, B, C, & CR awarded divided by "Total Grades". To derive the number of success grades awarded, multiply the value in "Total Grades" by the decimal version of the percentage shown in "Success Rate" (e.g., 68.2% means that you will multiply total grades of, say, 1,500 by 0.682 to arrive at 1,023 success grades awarded.