



# West Valley College

## Student Counts

### Drafting

	Spring 2006	Fall 2006	Spring 2007	Fall 2007
Enrollment*	56	38	48	36
Headcount**	46	30	36	26

**Chosen Parameters:**

from pa\_stu\_char\_dept where o\_college = 'WV' and course\_dept in ('DRAFT') and term in ('20077','20075','20073','20067','20065','20063') group by o\_college, term

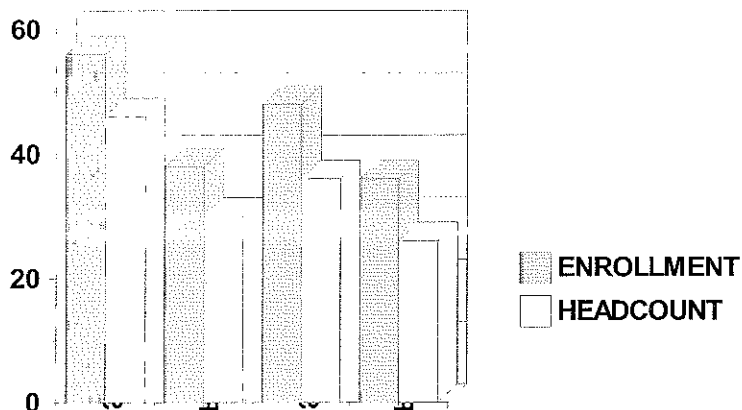
Notes : \* Enrollment is a "seat count" and shows the number of "warm bodies" filling classrooms. This is the appropriate value to use when describing enrollment activity.

\*\* Headcount is an unduplicated count of students. A student taking two different classes is counted only once. Used as the denominator in deriving ethnic, gender, and age distributions.

This report shows student and overall enrollment counts only for the students enrolled at first census (approx. 4th week) (i.e., counts do not include those students enrolling after the first census date).

Source : WVMCCD data measured at First census

**Student Counts**



**Semester**



## West Valley College

### Student Demographics (Gender, Age and Units Enrolled )

#### DRAFTING

	Spring 2006	Fall 2006	Spring 2007	Fall 2007
<b>Headcount (#)</b>	46	30	36	26

<b>Gender (%)</b>		Spring 2006	Fall 2006	Spring 2007	Fall 2007
<b>Female</b>		37.8%	33.3%	27.8%	42.3%
<b>Male</b>		62.2%	66.7%	72.2%	57.7%

<b>Age (%)</b>		Spring 2006	Fall 2006	Spring 2007	Fall 2007
<b>&lt; 21</b>		39.1%	43.3%	25.0%	30.8%
<b>21 - 25</b>		26.1%	20.0%	16.7%	38.5%
<b>26 - 30</b>		4.3%	3.3%	22.2%	3.8%
<b>31 - 40</b>		6.5%	13.3%	5.6%	0.0%
<b>41 - 50</b>		8.7%	6.7%	8.3%	15.4%
<b>51 - 60</b>		13.0%	6.7%	19.4%	11.5%
<b>&gt; 60</b>		2.2%	6.7%	2.8%	0.0%

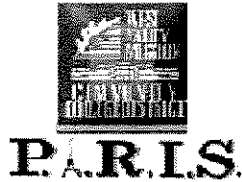
<b>Units Enrolled (%)</b>		Spring 2006	Fall 2006	Spring 2007	Fall 2007
<b>PT</b>	<b>3 or less</b>	21.7%	23.3%	36.1%	30.8%
	<b>3.5 - 6.0</b>	19.6%	10.0%	13.9%	23.1%
	<b>6.5 - 11.5</b>	21.7%	20.0%	19.4%	19.2%
<b>FT</b>	<b>12 or more</b>	37.0%	46.7%	30.6%	26.9%

**Chosen Paramters:**

*from pa\_stu\_char\_dept where o\_college = 'WV' and course\_dept in ('DRAFT') and term in ('20077','20075','20073','20067','20065','2006:*

**Notes:** This report shows student characteristics only for the students enrolled at first census (approx. 4th week) (i.e., headcount and distributions do not include those students enrolling after the first census date).

**Source:** WVMCCD data measured at First census



## West Valley College

### Student Characteristics (Ethnicity)

#### DRAFTING

	Spring 2005	Fall 2005	Spring 2006	Fall 2006	Spring 2007	Fall 2007	Coll. avg. F07
<b>Headcount (#)</b>	52	38	46	30	36	26	10,185

	%	%	%	%	%	%	%
<b>African American</b>	0.0%	2.7%	4.9%	0.0%	0.0%	0.0%	3.2%
<b>American Indian</b>	0.0%	0.0%	0.0%	0.0%	0.0%	0.0%	0.7%
<b>Asian/Fil/Pac Isl</b>	21.3%	10.8%	14.6%	13.3%	20.6%	26.1%	19.9%
<b>Hispanic</b>	10.6%	10.8%	17.1%	23.3%	8.8%	21.7%	16.7%
<b>Other Non-White</b>	2.1%	0.0%	2.4%	3.3%	0.0%	0.0%	2.0%
<b>White</b>	66.0%	75.7%	61.0%	60.0%	70.6%	52.2%	57.4%

**Chosen Parameters:**

*from pa\_stu\_char\_dept where o\_college = 'WV' and course\_dept in ('DRAFT') and term in ('2007', '20075', '20073', '20067', '20065', '20063', '20057', '20055', '20053')*

**Notes:** This report shows the ethnicities of those students enrolled at first census (approx. 4th week) (i.e., the headcount and ethnic distributions shown do not include those students that enrolled after the first census date. See ethnicity detail report within PARIS for actual numbers of students in each ethnic cohort as well as percentages.

Ethnic distributions are derived by excluding unknown/undeclared ethnicities from the denominator.

**Source:** WVMCCD data measured at First census



**P.A.R.I.S.**

**West Valley College  
Success Rate  
DRAFTING**

01/25/08

	Spring 2006		Summer 2006		Fall 2006		Spring 2007	
	Total Grades	Success Rate	Total Grades	Success Rate	Total Grades	Success Rate	Total Grades	Success Rate
<b>Total</b>	<b>45</b>	<b>73.3%</b>	<b>10</b>	<b>80.0%</b>	<b>37</b>	<b>56.8%</b>	<b>39</b>	<b>53.8%</b>
African American	1	100.0%	0	0.0%	0	0.0%	0	0.0%
Amer. Indian/Alaskan	0	0.0%	0	0.0%	0	0.0%	0	0.0%
Asian	4	100.0%	4	75.0%	5	60.0%	4	75.0%
Filipino	1	100.0%	0	0.0%	2	100.0%	4	25.0%
Hispanic	3	0.0%	1	100.0%	4	75.0%	2	50.0%
Other Non-White	1	100.0%	0	0.0%	1	100.0%	0	0.0%
Pac-Islandr.	1	0.0%	0	0.0%	0	0.0%	0	0.0%
White	25	76.0%	3	100.0%	20	55.0%	24	54.2%
<b>Female</b>	<b>17</b>	<b>76.5%</b>	<b>2</b>	<b>100.0%</b>	<b>11</b>	<b>45.5%</b>	<b>12</b>	<b>58.3%</b>
<b>Male</b>	<b>27</b>	<b>70.4%</b>	<b>8</b>	<b>75.0%</b>	<b>26</b>	<b>61.5%</b>	<b>27</b>	<b>51.9%</b>
<b>&lt;21</b>	<b>13</b>	<b>84.6%</b>	<b>4</b>	<b>75.0%</b>	<b>16</b>	<b>68.8%</b>	<b>7</b>	<b>57.1%</b>
<b>21 to 25</b>	<b>16</b>	<b>56.3%</b>	<b>3</b>	<b>66.7%</b>	<b>8</b>	<b>25.0%</b>	<b>10</b>	<b>30.0%</b>
<b>26 to 30</b>	<b>2</b>	<b>50.0%</b>	<b>1</b>	<b>100.0%</b>	<b>2</b>	<b>50.0%</b>	<b>8</b>	<b>62.5%</b>
<b>31 to 40</b>	<b>3</b>	<b>100.0%</b>	<b>1</b>	<b>100.0%</b>	<b>4</b>	<b>75.0%</b>	<b>4</b>	<b>75.0%</b>
<b>41+</b>	<b>11</b>	<b>81.8%</b>	<b>1</b>	<b>100.0%</b>	<b>7</b>	<b>57.1%</b>	<b>10</b>	<b>60.0%</b>
<b>College Avg.</b>	<b>28239</b>	<b>64.7%</b>	<b>6236</b>	<b>77.7%</b>	<b>29340</b>	<b>64.4%</b>	<b>29583</b>	<b>64.9%</b>

**Chosen Parameters:**

from pa\_grd\_sum\_eth\_dept where o\_college = 'WV' and term in ('2007'; '20075'; '20073'; '20067'; '20065'; '20063') and course\_dept in ('DRAFT')

Notes : "Total Grades" is the total number of grades awarded (A, B, C, D, F, I, CR, NC, or W) to students in a given group (e.g., total, ethnic, gender, or age group).

"Success Rate" is the total number of A, B, C, & CR awarded divided by "Total Grades". To derive the number of success grades awarded, multiply the value in "Total Grades" by the decimal version of the percentage shown in "Success Rate" (e.g., 68.2% means that you will multiply total grades of, say, 1,500 by 0.682 to arrive at 1,023 success grades awarded.