

PROGRAM REVIEW DATA		Department: Child Studies						
		2007-2008 Academic Year						
Table I								
ENROLLMENT DATA								
Child Studies								
Department Enrollment Data:							Spring 06 to Spring 08 Change	
		Fall 2005	Spring 2006	Fall 2006	Spring 2007	Fall 2007	Spring 2008	
Enrollment*		657	634	667	596	728	695	9.62%
Unduplicated headcount*		412	420	433	380	459	461	9.76%
FTEs		71	63	64	61	71	68	7.94%
WSCH		2,300	2,051	2,077	1,985	2,300	2,223	8.39%
WSCH/FTEf		514.0	503.0	451.0	421.0	462.0	490.0	-2.58%
Actual Cost per FTES 2007-2008		\$4,399						
College Enrollment Data:								Spring 06 to Spring 08 Change
		Fall 2005	Spring 2006	Fall 2006	Spring 2007	Fall 2007	Spring 2008	
Enrollment		33,029	30,823	32,813	31,787	34,638	33,209	7.7%
Unduplicated headcount		9,691	9,587	9,830	9,851	10,185	10,041	4.7%
FTEs		4,083	3,801	3,904	3,879	4,063	3,732	-1.8%
WSCH		133,130	123,945	127,296	126,480	132,502	121,712	-1.8%
WSCH/FTEf		573.50	534.00	547.60	525.10	557.40	496.50	-7.0%

Department Enrollment Trend

Term	Enrollment*	Unduplicated headcount*	FTEs
Fall 2005	657	412	71
Spring 2006	634	420	63
Fall 2006	667	433	64
Spring 2007	596	380	61
Fall 2007	728	459	71
Spring 2008	695	461	68

WSCH

Term	WSCH
Fall 2005	2,300
Spring 2006	2,051
Fall 2006	2,077
Spring 2007	1,985
Fall 2007	2,300
Spring 2008	2,223

Table IIa							
DEMOGRAPHIC DATA							
Child Studies							
Department Ethnicity Data:							Spring 06 to Spring 08 Change
	Fall 2005	Spring 2006	Fall 2006	Spring 2007	Fall 2007	Spring 2008	
African American	2.1%	3.9%	2.5%	2.3%	2.6%	3.7%	-0.2%
American Indian	1.6%	1.3%	1.2%	0.9%	0.7%	0.9%	-0.4%
Asian/Pacific Islander	14.6%	18.3%	14.4%	16.5%	15.3%	16.4%	-1.9%
Hispanic	18.9%	16.5%	22.9%	15.6%	19.2%	21.9%	5.4%
Other Non-White	2.7%	1.6%	2.2%	2.8%	1.4%	1.6%	0.0%
White	60.1%	58.4%	56.7%	61.9%	60.8%	55.4%	-3.0%
College Ethnicity Data:							Spring 06 to Spring 08 Change
	Fall 2005	Spring 2006	Fall 2006	Spring 2007	Fall 2007	Spring 2008	
African American	3.3%	3.2%	3.1%	3.3%	3.2%	3.00%	-0.20%
American Indian	0.8%	0.9%	0.9%	0.8%	0.7%	0.90%	0.00%
Asian/Pacific Islander	18.9%	19.3%	18.7%	19.7%	19.7%	19.50%	0.20%
Hispanic	15.9%	15.3%	17.1%	16.0%	16.7%	15.90%	0.60%
Other Non-White	2.1%	2.3%	2.1%	2.2%	2.0%	2.30%	0.00%
White	59.0%	59.0%	58.1%	57.9%	57.5%	58.40%	-0.60%
Spring 2008 Comparison of Student Enrollment by Ethnicity							
	Department	College					
African American	3.7%	3.00%					
American Indian	0.9%	0.90%					
Asian/Pacific Islander	16.4%	19.50%					
Hispanic	21.9%	15.90%					
Other Non-White	1.6%	2.30%					
White	55.4%	58.40%					

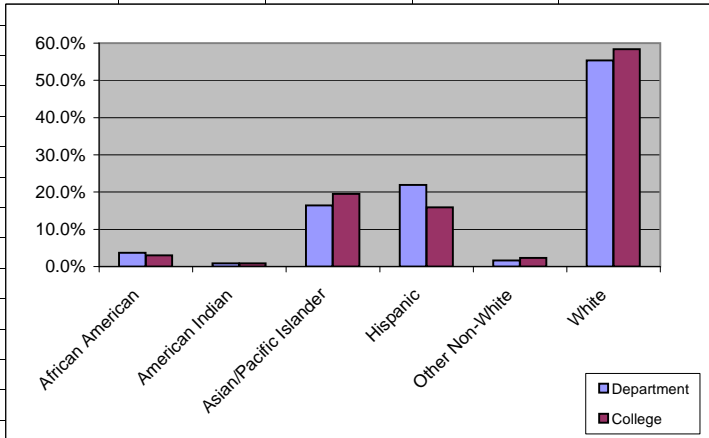


Table IIb							
Department Gender Data:							
	Fall 2005	Spring 2006	Fall 2006	Spring 2007	Fall 2007	Spring 2008	Spring 06 to Spring 08 Change
Female	91.6%	94.5%	91.6%	91.4%	93.6%	90.6%	-3.9%
Male	8.4%	5.5%	8.4%	8.6%	6.4%	9.4%	3.9%
College Gender Data:							
	Fall 2005	Spring 2006	Fall 2006	Spring 2007	Fall 2007	Spring 2008	Spring 06 to Spring 08 Change
Female	59.3%	59.1%	59.5%	59.3%	58.6%	58.4%	-0.7%
Male	40.7%	40.9%	40.5%	40.7%	41.4%	41.6%	0.7%
Spring 2008 Comparison of Student Enrollment by Gender							
	Department	College					
Female	90.6%	58.4%					
Male	9.4%	41.6%					

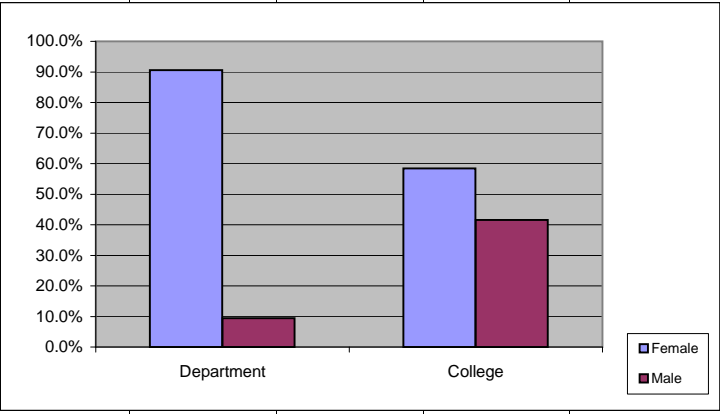


Table IIc							Spring 06 to Spring 08 Change
Department Age Data:	Fall 2005	Spring 2006	Fall 2006	Spring 2007	Fall 2007	Spring 2008	
< 21	26.9%	27.9%	29.6%	23.4%	29.2%	28.4%	0.5%
21 - 25	21.1%	17.9%	18.2%	22.6%	21.6%	19.3%	1.4%
26 - 30	9.0%	7.9%	6.9%	10.3%	10.5%	10.2%	2.3%
31 - 40	15.5%	18.1%	17.8%	17.9%	13.1%	15.8%	-2.3%
41 - 50	17.2%	18.1%	17.6%	15.5%	16.8%	16.7%	-1.4%
51 - 60	9.5%	9.0%	7.9%	7.9%	7.0%	7.6%	-1.4%
> 60	0.7%	1.2%	2.1%	2.4%	2.0%	2.0%	0.8%
College Age Data:	Fall 2005	Spring 2006	Fall 2006	Spring 2007	Fall 2007	Spring 2008	Spring 06 to Spring 08 Change
< 21	40.2%	36.9%	39.0%	35.9%	38.4%	35.1%	-1.8%
21 - 25	21.6%	23.1%	21.3%	22.7%	22.2%	23.7%	2.1%
26 - 30	7.5%	8.0%	7.8%	8.6%	8.4%	9.2%	1.7%
31 - 40	10.5%	10.6%	10.5%	11.1%	10.5%	10.9%	0.4%
41 - 50	11.5%	12.2%	11.9%	11.7%	11.1%	11.1%	-0.4%
51 - 60	5.3%	5.7%	6.1%	6.6%	6.2%	6.6%	1.3%
> 60	3.5%	3.3%	3.3%	3.5%	3.3%	3.5%	0.0%
Spring 2008 Comparison of Student Enrollment by Age							
	Department	College					
< 21	28.4%	35.1%					
21 - 25	19.3%	23.7%					
26 - 30	10.2%	9.2%					
31 - 40	15.8%	10.9%					
41 - 50	16.7%	11.1%					
51 - 60	7.6%	6.6%					
> 60	2.0%	3.5%					

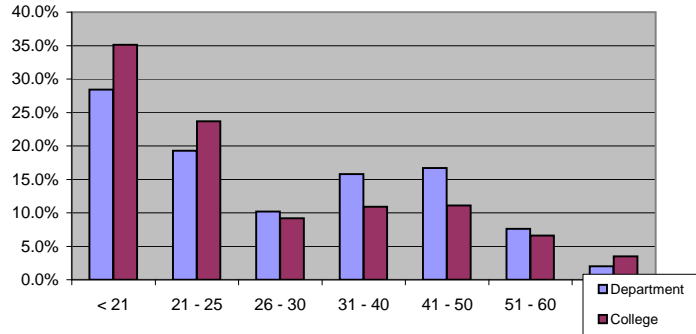
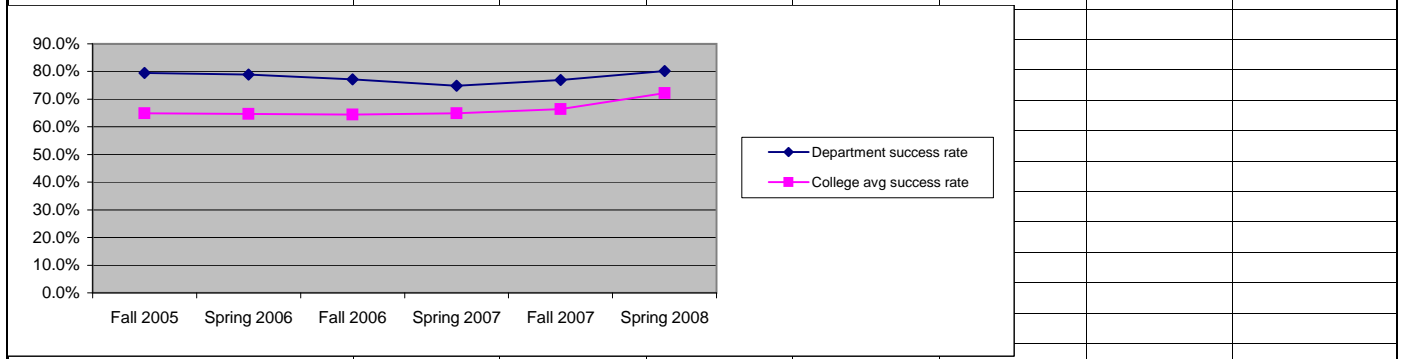


Table IIIa							
PERFORMANCE DATA							
Child Studies	Fall 2005	Spring 2006	Fall 2006	Spring 2007	Fall 2007	Spring 2008	Spring 06 to Spring 08 Change
Department success rate	79.5%	78.9%	77.2%	74.9%	76.9%	80.2%	1.3%
College avg success rate	64.9%	64.7%	64.4%	64.9%	66.4%	72.2%	7.5%



Child Studies	Fall 2005	Spring 2006	Fall 2006	Spring 2007	Fall 2007	Spring 2008	Spring 06 to Spring 08 Change
Department retention rate	85.6%	85.4%	86.6%	85.9%	87.5%	91.3%	5.9%
College avg retention rate	77.8%	77.8%	77.0%	76.4%	77.6%	76.5%	-1.3%

