

PROGRAM REVIEW DATA Department: **Computer Applications**
2007-2008 Academic Year

Table I
ENROLLMENT DATA
Computer Applications

Department Enrollment Data:							Spring 06 to Spring 08 Change
Fall 2005	Spring 2006	Fall 2006	Spring 2007	Fall 2007	Spring 2008		
Enrollment*	468	527	503	506	581	562	6.64%
Unduplicated headcount*	295	329	308	318	378	335	1.82%
FTEs	37	42	37	38	40	34	-19.05%
WSCH	1,200	1,374	1,216	1,237	1,311	1,108	-19.36%
WSCH/FTEf	295.0	537.0	515.0	597.0	512.0	437.0	-18.62%

Actual Cost per FTES 2007-2008 \$1,444

College Enrollment Data:

College Enrollment Data:							Spring 06 to Spring 08 Change
Fall 2005	Spring 2006	Fall 2006	Spring 2007	Fall 2007	Spring 2008		
Enrollment	33,029	30,823	32,813	31,787	34,638	33,209	7.7%
Unduplicated headcount	9,691	9,587	9,830	9,851	10,185	10,041	4.7%
FTEs	4,083	3,801	3,904	3,879	4,063	3,732	-1.8%
WSCH	133,130	123,945	127,296	126,480	132,502	121,712	-1.8%
WSCH/FTEf	573.50	534.00	547.60	525.10	557.40	496.50	-7.0%

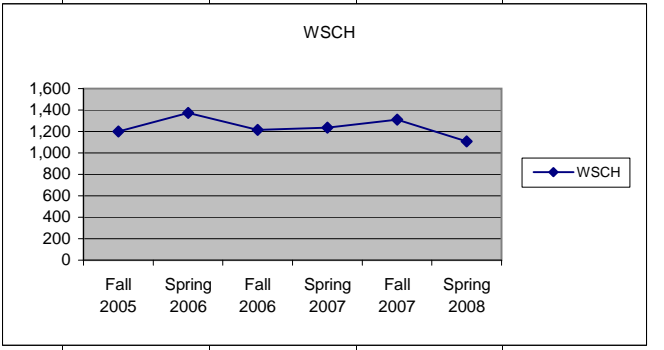
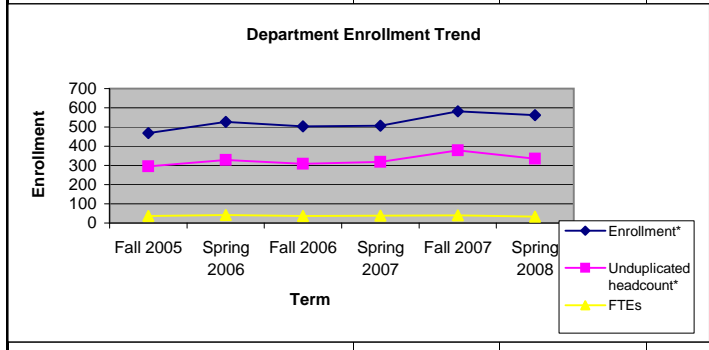


Table IIa							
DEMOGRAPHIC DATA							
Computer Applications							
Department Ethnicity Data:							Spring 06 to Spring 08 Change
	Fall 2005	Spring 2006	Fall 2006	Spring 2007	Fall 2007	Spring 2008	
African American	4.9%	3.1%	2.1%	2.4%	4.9%	3.9%	0.8%
American Indian	1.1%	0.3%	1.1%	0.7%	0.6%	0.7%	0.4%
Asian/Pacific Islander	19.0%	19.1%	20.9%	24.2%	17.3%	17.7%	-1.4%
Hispanic	14.6%	15.3%	9.2%	12.8%	14.2%	17.7%	2.4%
Other Non-White	3.0%	2.4%	2.1%	1.4%	1.7%	2.3%	-0.1%
White	57.5%	59.7%	64.5%	58.5%	61.3%	57.7%	-2.0%
College Ethnicity Data:							Spring 06 to Spring 08 Change
	Fall 2005	Spring 2006	Fall 2006	Spring 2007	Fall 2007	Spring 2008	
African American	3.3%	3.2%	3.1%	3.3%	3.2%	3.00%	-0.20%
American Indian	0.8%	0.9%	0.9%	0.8%	0.7%	0.90%	0.00%
Asian/Pacific Islander	18.9%	19.3%	18.7%	19.7%	19.7%	19.50%	0.20%
Hispanic	15.9%	15.3%	17.1%	16.0%	16.7%	15.90%	0.60%
Other Non-White	2.1%	2.3%	2.1%	2.2%	2.0%	2.30%	0.00%
White	59.0%	59.0%	58.1%	57.9%	57.5%	58.40%	-0.60%
Spring 2008 Comparison of Student Enrollment by Ethnicity							
	Department	College					
African American	3.9%	3.00%					
American Indian	0.7%	0.90%					
Asian/Pacific Islander	17.7%	19.50%					
Hispanic	17.7%	15.90%					
Other Non-White	2.3%	2.30%					
White	57.7%	58.40%					

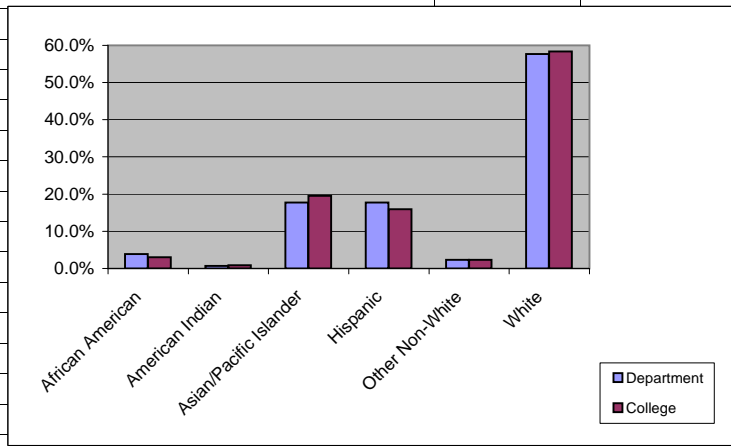


Table IIb							
Department Gender Data:							Spring 06 to Spring 08 Change
	Fall 2005	Spring 2006	Fall 2006	Spring 2007	Fall 2007	Spring 2008	
Female	65.5%	66.3%	69.1%	71.1%	71.6%	70.4%	4.1%
Male	34.5%	33.7%	30.9%	28.9%	28.4%	29.6%	-4.1%
College Gender Data:							Spring 06 to Spring 08 Change
	Fall 2005	Spring 2006	Fall 2006	Spring 2007	Fall 2007	Spring 2008	
Female	59.3%	59.1%	59.5%	59.3%	58.6%	58.4%	-0.7%
Male	40.7%	40.9%	40.5%	40.7%	41.4%	41.6%	0.7%
Spring 2008 Comparison of Student Enrollment by Gender							
	Department	College					
Female	70.4%	58.4%					
Male	29.6%	41.6%					

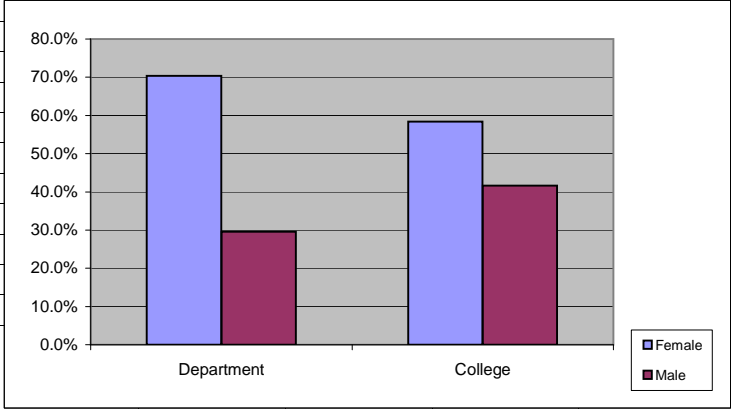


Table IIc							Spring 06 to Spring 08 Change
Department Age Data:	Fall 2005	Spring 2006	Fall 2006	Spring 2007	Fall 2007	Spring 2008	
< 21	22.0%	22.5%	15.3%	21.1%	18.0%	20.3%	-2.2%
21 - 25	17.3%	21.0%	16.6%	14.8%	15.9%	16.4%	-4.6%
26 - 30	7.1%	8.8%	8.8%	8.8%	10.1%	12.2%	3.4%
31 - 40	14.6%	14.0%	18.8%	14.8%	15.1%	13.7%	-0.3%
41 - 50	24.7%	19.5%	22.7%	21.7%	23.5%	16.1%	-3.4%
51 - 60	9.8%	9.4%	13.3%	14.8%	13.2%	14.6%	5.2%
> 60	4.4%	4.9%	4.5%	4.1%	4.2%	6.6%	1.7%
College Age Data:	Fall 2005	Spring 2006	Fall 2006	Spring 2007	Fall 2007	Spring 2008	Spring 06 to Spring 08 Change
< 21	40.2%	36.9%	39.0%	35.9%	38.4%	35.1%	-1.8%
21 - 25	21.6%	23.1%	21.3%	22.7%	22.2%	23.7%	2.1%
26 - 30	7.5%	8.0%	7.8%	8.6%	8.4%	9.2%	1.7%
31 - 40	10.5%	10.6%	10.5%	11.1%	10.5%	10.9%	0.4%
41 - 50	11.5%	12.2%	11.9%	11.7%	11.1%	11.1%	-0.4%
51 - 60	5.3%	5.7%	6.1%	6.6%	6.2%	6.6%	1.3%
> 60	3.5%	3.3%	3.3%	3.5%	3.3%	3.5%	0.0%
Spring 2008 Comparison of Student Enrollment by Age							
	Department	College					
< 21	20.3%	35.1%					
21 - 25	16.4%	23.7%					
26 - 30	12.2%	9.2%					
31 - 40	13.7%	10.9%					
41 - 50	16.1%	11.1%					
51 - 60	14.6%	6.6%					
> 60	6.6%	3.5%					

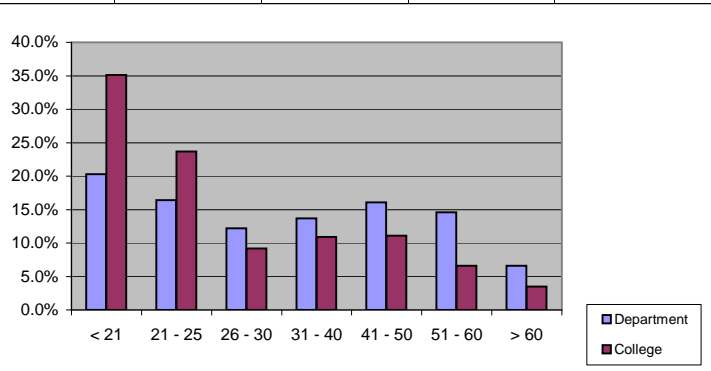
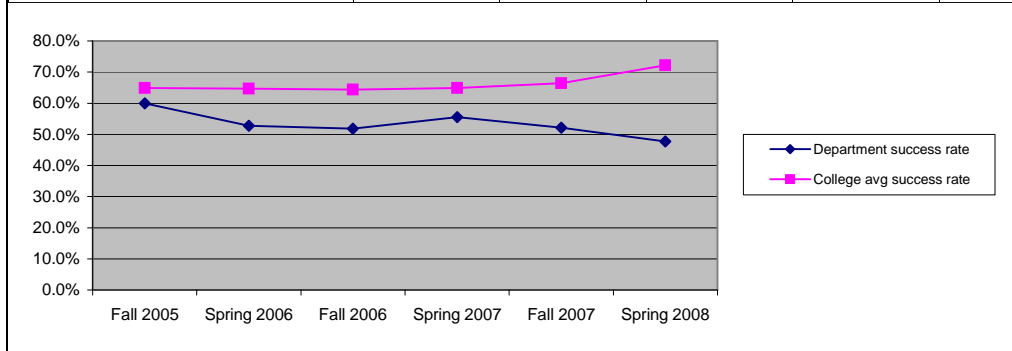


Table IIIa							
PERFORMANCE DATA							
Computer Applications							
	Fall 2005	Spring 2006	Fall 2006	Spring 2007	Fall 2007	Spring 2008	Spring 06 to Spring 08 Change
Department success rate	59.9%	52.8%	51.8%	55.5%	52.1%	47.7%	-5.1%
College avg success rate	64.9%	64.7%	64.4%	64.9%	66.4%	72.2%	7.5%



Computer Applications							
	Fall 2005	Spring 2006	Fall 2006	Spring 2007	Fall 2007	Spring 2008	Spring 06 to Spring 08 Change
Department retention rate	82.8%	84.8%	87.6%	88.8%	84.9%	84.4%	-0.4%
College avg retention rate	77.8%	77.8%	77.0%	76.4%	77.6%	76.5%	-1.3%

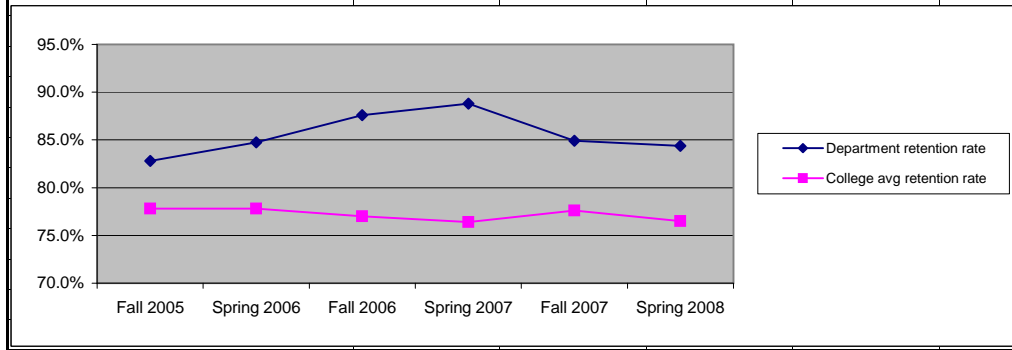


Table IIIb								
DISTANCE EDUCATION DATA								
Computer Applications								
2007-2008 Academic Year								
CA*010D	Success Rate	Retention Rate						
Classroom (2 sections)	71.00%	81.50%						
Distance Ed (4 sections)	40.20%	50.40%						
CA*030	Success Rate	Retention Rate						
Distance Ed (2 sections)	32.50%	56.60%						
CA*043B	Success Rate	Retention Rate						
Distance Ed (1 section)	18.20%	77.30%						
CA*062G	Success Rate	Retention Rate						
Distance Ed (section)	28.20%	52.90%						
CA*064	Success Rate	Retention Rate						
Distance Ed (2 sections)	27.50%	62.30%						
CA*070	Success Rate	Retention Rate						
Classroom (1 section)	90.90%	90.90%						
Distance Ed (2 sections)	52.00%	86.00%						
CA*074	Success Rate	Retention Rate						
Distance Ed (2section)	50.00%	84.40%						
CA*096	Success Rate	Retention Rate						
Distance Ed (1 section)	20.70%	72.40%						