

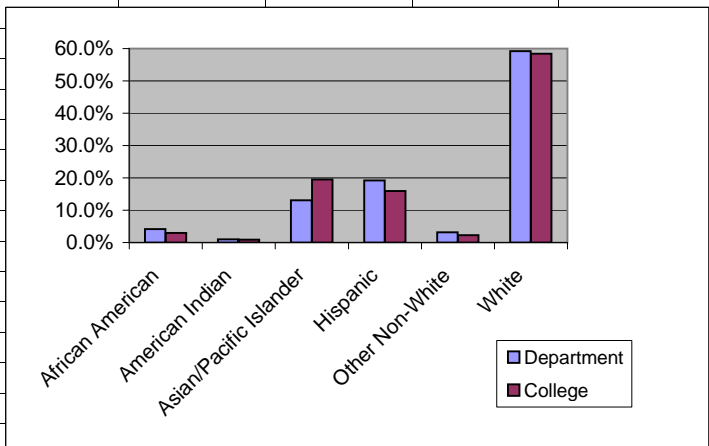
<b>PROGRAM REVIEW DATA</b>		<b>Department: Math</b>						
		<b>2007-2008 Academic Year</b>						
<b>Table I</b>								
<b>ENROLLMENT DATA</b>								
<b>Math</b>								
<b>Department Enrollment Data:</b>								<b>Spring 06 to Spring 08 Change</b>
	<b>Fall 2005</b>	<b>Spring 2006</b>	<b>Fall 2006</b>	<b>Spring 2007</b>	<b>Fall 2007</b>	<b>Spring 2008</b>		
<b>Enrollment*</b>	2,901	2,501	2,714	2,592	2,871	2,577		3.04%
<b>Unduplicated headcount*</b>	2,509	2,188	2,359	2,227	2,395	2,202		0.64%
<b>FTEs</b>	341	292	312	298	329	297		1.71%
<b>WSCH</b>	11,130	9,516	10,178	9,704	10,720	9,700		1.93%
<b>WSCH/FTEf</b>	502.0	439.0	460.0	444.0	503.0	434.0		-1.14%
<b>Actual Cost per FTES 2007-2008</b>		<b>\$3,082</b>						
<b>College Enrollment Data:</b>								<b>Spring 06 to Spring 08 Change</b>
	<b>Fall 2005</b>	<b>Spring 2006</b>	<b>Fall 2006</b>	<b>Spring 2007</b>	<b>Fall 2007</b>	<b>Spring 2008</b>		
<b>Enrollment</b>	33,029	30,823	32,813	31,787	34,638	33,209		7.7%
<b>Unduplicated headcount</b>	9,691	9,587	9,830	9,851	10,185	10,041		4.7%
<b>FTEs</b>	4,083	3,801	3,904	3,879	4,063	3,732		-1.8%
<b>WSCH</b>	133,130	123,945	127,296	126,480	132,502	121,712		-1.8%
<b>WSCH/FTEf</b>	573.50	534.00	547.60	525.10	557.40	496.50		-7.0%

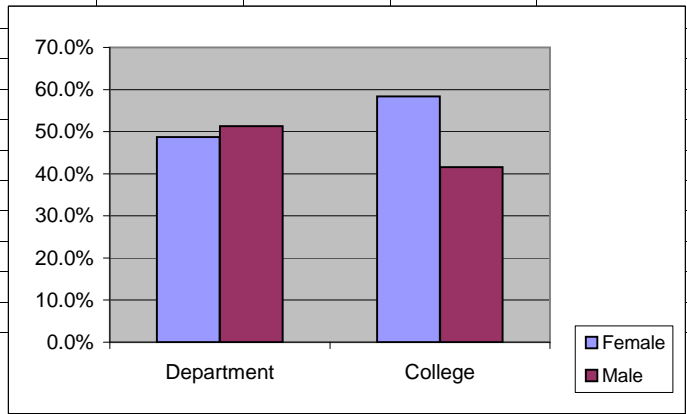
Term	Enrollment*	Unduplicated headcount*	FTEs
Fall 2005	2,901	2,509	341
Spring 2006	2,501	2,188	292
Fall 2006	2,714	2,359	312
Spring 2007	2,592	2,227	298
Fall 2007	2,871	2,395	329
Spring 2008	2,577	2,202	297

Term	WSCH
Fall 2005	11,130
Spring 2006	9,516
Fall 2006	10,178
Spring 2007	9,704
Fall 2007	10,720
Spring 2008	9,700

<b>Table IIa</b>							
<b>DEMOGRAPHIC DATA</b>							
<b>Math</b>							
<b>Department Ethnicity Data:</b>							<b>Spring 06 to Spring 08 Change</b>
	<b>Fall 2005</b>	<b>Spring 2006</b>	<b>Fall 2006</b>	<b>Spring 2007</b>	<b>Fall 2007</b>	<b>Spring 2008</b>	
African American	3.5%	3.9%	4.1%	4.1%	4.0%	4.2%	0.3%
American Indian	0.8%	0.8%	1.0%	0.9%	1.0%	1.0%	0.2%
Asian/Pacific Islander	14.6%	15.1%	14.0%	15.2%	14.3%	13.1%	-2.0%
Hispanic	18.9%	18.0%	20.2%	19.9%	19.9%	19.2%	1.2%
Other Non-White	2.6%	2.6%	2.7%	3.1%	3.3%	3.2%	0.6%
White	59.6%	59.4%	58.0%	56.8%	57.6%	59.2%	-0.2%
<b>College Ethnicity Data:</b>							<b>Spring 06 to Spring 08 Change</b>
	<b>Fall 2005</b>	<b>Spring 2006</b>	<b>Fall 2006</b>	<b>Spring 2007</b>	<b>Fall 2007</b>	<b>Spring 2008</b>	
African American	3.3%	3.2%	3.1%	3.3%	3.2%	3.00%	-0.20%
American Indian	0.8%	0.9%	0.9%	0.8%	0.7%	0.90%	0.00%
Asian/Pacific Islander	18.9%	19.3%	18.7%	19.7%	19.7%	19.50%	0.20%
Hispanic	15.9%	15.3%	17.1%	16.0%	16.7%	15.90%	0.60%
Other Non-White	2.1%	2.3%	2.1%	2.2%	2.0%	2.30%	0.00%
White	59.0%	59.0%	58.1%	57.9%	57.5%	58.40%	-0.60%
<b>Spring 2008 Comparison of Student Enrollment by Ethnicity</b>							
	<b>Department</b>	<b>College</b>					
African American	4.2%	3.00%					
American Indian	1.0%	0.90%					
Asian/Pacific Islander	13.1%	19.50%					
Hispanic	19.2%	15.90%					
Other Non-White	3.2%	2.30%					
White	59.2%	58.40%					



<b>Table IIb</b>							
<b>Department Gender Data:</b>							
	Fall 2005	Spring 2006	Fall 2006	Spring 2007	Fall 2007	Spring 2008	Spring 06 to Spring 08 Change
Female	48.5%	48.6%	50.0%	49.0%	48.0%	48.7%	0.1%
Male	51.5%	51.4%	50.0%	51.0%	52.0%	51.3%	-0.1%
<b>College Gender Data:</b>							
	Fall 2005	Spring 2006	Fall 2006	Spring 2007	Fall 2007	Spring 2008	Spring 06 to Spring 08 Change
Female	59.3%	59.1%	59.5%	59.3%	58.6%	58.4%	-0.7%
Male	40.7%	40.9%	40.5%	40.7%	41.4%	41.6%	0.7%
<b>Spring 2008 Comparison of Student Enrollment by Gender</b>							
	Department	College					
Female	48.7%	58.4%					
Male	51.3%	41.6%					



<b>Table IIc</b>							<b>Spring 06 to Spring 08 Change</b>
<b>Department Age Data:</b>	<b>Fall 2005</b>	<b>Spring 2006</b>	<b>Fall 2006</b>	<b>Spring 2007</b>	<b>Fall 2007</b>	<b>Spring 2008</b>	
< 21	63.2%	58.7%	63.3%	58.3%	63.6%	58.5%	-0.2%
21 - 25	22.6%	25.9%	22.0%	26.1%	23.4%	25.5%	-0.4%
26 - 30	4.7%	5.5%	5.0%	6.3%	5.9%	7.6%	2.1%
31 - 40	4.7%	4.6%	3.9%	4.4%	3.5%	4.2%	-0.4%
41 - 50	3.6%	3.8%	4.2%	3.2%	2.5%	3.0%	-0.8%
51 - 60	1.0%	1.1%	1.3%	1.3%	0.9%	0.9%	-0.2%
> 60	0.2%	0.3%	0.3%	0.3%	0.2%	0.3%	0.0%
<b>College Age Data:</b>	<b>Fall 2005</b>	<b>Spring 2006</b>	<b>Fall 2006</b>	<b>Spring 2007</b>	<b>Fall 2007</b>	<b>Spring 2008</b>	<b>Spring 06 to Spring 08 Change</b>
< 21	40.2%	36.9%	39.0%	35.9%	38.4%	35.1%	-1.8%
21 - 25	21.6%	23.1%	21.3%	22.7%	22.2%	23.7%	2.1%
26 - 30	7.5%	8.0%	7.8%	8.6%	8.4%	9.2%	1.7%
31 - 40	10.5%	10.6%	10.5%	11.1%	10.5%	10.9%	0.4%
41 - 50	11.5%	12.2%	11.9%	11.7%	11.1%	11.1%	-0.4%
51 - 60	5.3%	5.7%	6.1%	6.6%	6.2%	6.6%	1.3%
> 60	3.5%	3.3%	3.3%	3.5%	3.3%	3.5%	0.0%
<b>Spring 2008 Comparison of Student Enrollment by Age</b>							
	<b>Department</b>	<b>College</b>					
< 21	58.5%	35.1%					
21 - 25	25.5%	23.7%					
26 - 30	7.6%	9.2%					
31 - 40	4.2%	10.9%					
41 - 50	3.0%	11.1%					
51 - 60	0.9%	6.6%					
> 60	0.3%	3.5%					

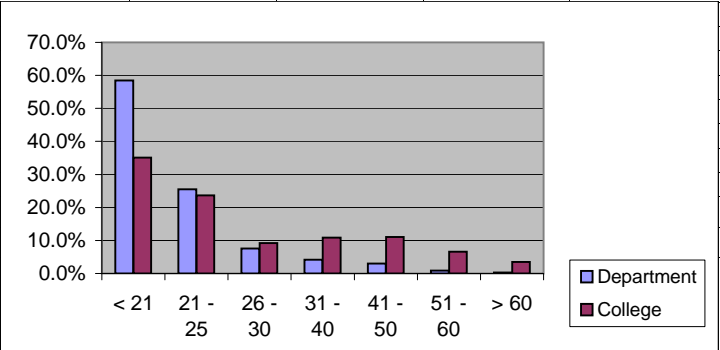
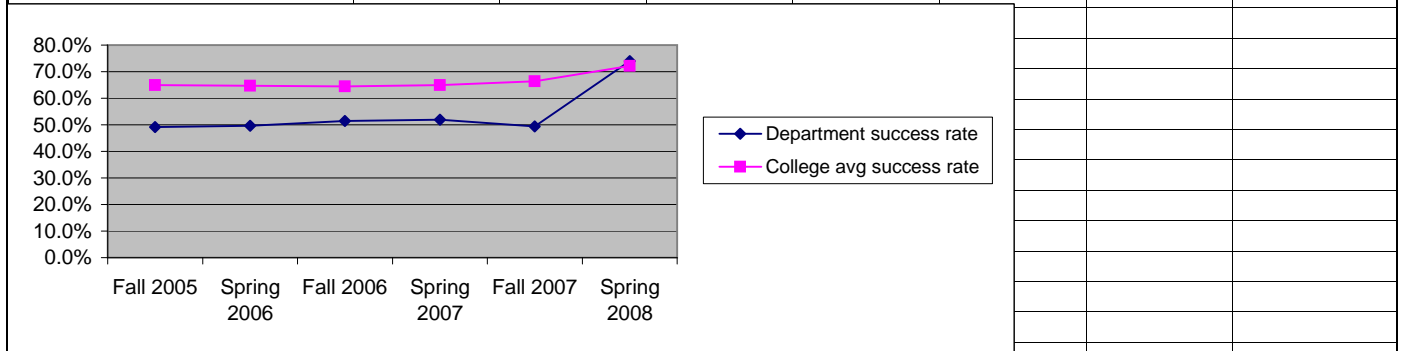
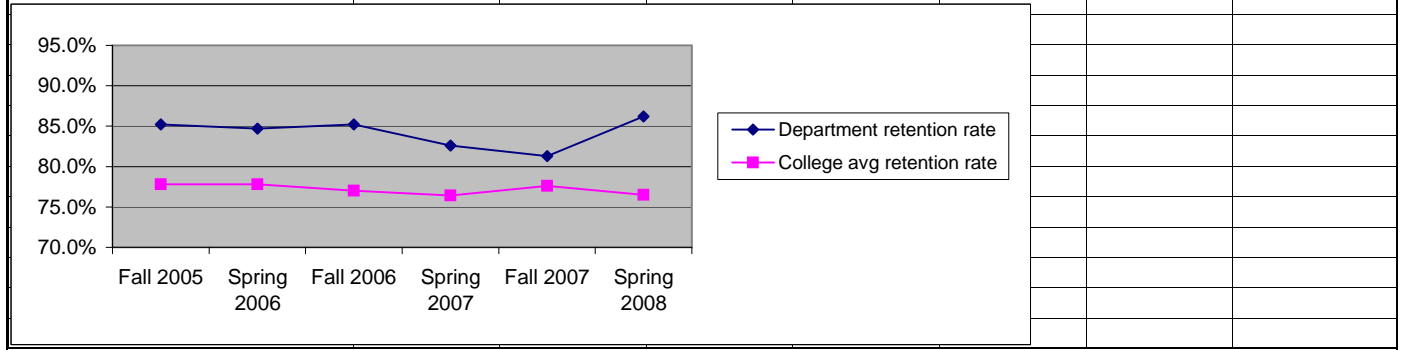


Table IIIa							
PERFORMANCE DATA							
Math							
	Fall 2005	Spring 2006	Fall 2006	Spring 2007	Fall 2007	Spring 2008	Spring 06 to Spring 08 Change
Department success rate	49.2%	49.6%	51.4%	51.9%	49.4%	74.0%	24.4%
College avg success rate	64.9%	64.7%	64.4%	64.9%	66.4%	72.2%	7.5%



Math							
	Fall 2005	Spring 2006	Fall 2006	Spring 2007	Fall 2007	Spring 2008	Spring 06 to Spring 08 Change
Department retention rate	85.2%	84.7%	85.2%	82.6%	81.3%	86.2%	1.5%
College avg retention rate	77.8%	77.8%	77.0%	76.4%	77.6%	76.5%	-1.3%



<i>Table IIIb</i>		
<b>DISTANCE EDUCATION DATA</b>		
<b>Math</b>		
<b>2007-2008 Academic Year</b>		
MATH*106R	Success Rate	Retention Rate
Classroom (2 sections)	29.51%	59.70%
Distance Ed ( 2 sections)	25.32%	50.00%

