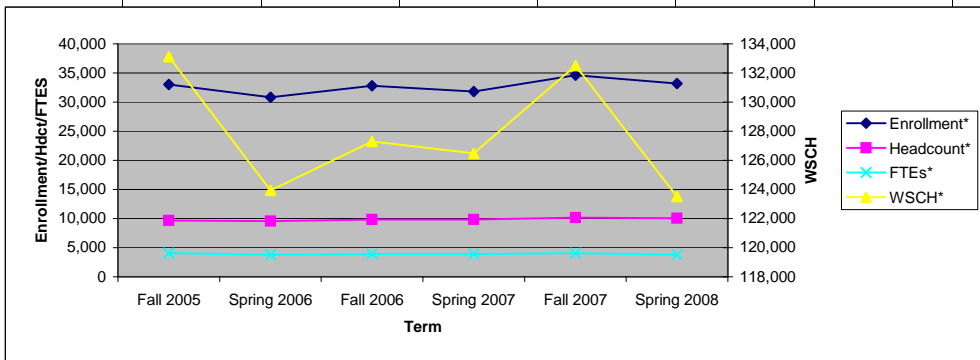


**COLLEGE-WIDE DATA** **West Valley College**  
**2007-2008**

<b>TABLE I - ENROLLMENT DATA</b>	Fall 2005	Spring 2006	Fall 2006	Spring 2007	Fall 2007	Spring 2008	Spring 06 to Spring 08 Change
Enrollment*	33,029	30,823	32,813	31,787	34,638	33,209	7.7%
Headcount*	9,691	9,587	9,830	9,851	10,185	10,041	4.7%
WSCH*	133,130	123,945	127,296	126,480	132,502	123,508	-0.4%
FTEs*	4,083	3,801	3,904	3,879	4,063	3,787	-0.4%
WSCH/FTEF*	573.50	534.00	547.60	525.10	557.40	496.50	-7.0%



**TABLE II - DEMOGRAPHIC DATA**

<b>College Ethnicity Data:</b>	Fall 2005	Spring 2006	Fall 2006	Spring 2007	Fall 2007	Spring 2008	Spring 06 to Spring 08 Change
African American	3.3%	3.2%	3.1%	3.3%	3.2%	3.0%	-0.2%
American Indian	0.8%	0.9%	0.9%	0.8%	0.7%	0.9%	0.1%
Asian/Pacific Islander	18.9%	19.3%	18.7%	19.7%	19.7%	19.5%	0.6%
Hispanic	15.9%	15.3%	17.1%	16.0%	16.7%	15.9%	0.0%
Other Non-White	2.1%	2.3%	2.1%	2.2%	2.0%	2.3%	0.2%
White	59.0%	59.0%	58.1%	57.9%	57.5%	58.4%	-0.6%

<b>College Gender Data:</b>	Fall 2005	Spring 2006	Fall 2006	Spring 2007	Fall 2007	Spring 2008	Change
Female	59.3%	59.1%	59.5%	59.3%	58.6%	58.4%	-0.7%
Male	40.7%	40.9%	40.5%	40.7%	41.4%	41.6%	0.7%

<b>College Age Data:</b>	Fall 2005	Spring 2006	Fall 2006	Spring 2007	Fall 2007	Spring 2008	Change
< 21	40.2%	36.9%	39.0%	35.9%	38.4%	35.1%	-1.8%
21 - 25	21.6%	23.1%	21.3%	22.7%	22.2%	23.7%	0.6%
26 - 30	7.5%	8.0%	7.8%	8.6%	8.4%	9.2%	1.2%
31 - 40	10.5%	10.6%	10.5%	11.1%	10.5%	10.9%	0.3%
41 - 50	11.5%	12.2%	11.9%	11.7%	11.1%	11.1%	-1.1%
51 - 60	5.3%	5.7%	6.1%	6.6%	6.2%	6.6%	0.9%
> 60	3.5%	3.3%	3.3%	3.5%	3.3%	3.5%	0.2%

<b>TABLE III: PERFORMANCE DATA</b>	Fall 2005	Spring 2006	Fall 2006	Spring 2007	Fall 2007	Spring 2008	Change
College avg success rate*	64.9%	64.7%	64.4%	64.9%	66.4%	67.8%	3.1%
College avg retention rate*	79.5%	80.0%	82.6%	83.8%	83.5%	82.3%	2.3%

<b>TABLE IV - DISTANCE EDUCATION DATA</b>	Fall 2005	Spring 2006	Fall 2006	Spring 2007	Fall 2007	Spring 2008	Change
<b>SUCCESS RATES</b>							
Distance Education	47.5%	49.5%	48.5%	53.5%	46.9%	50.9%	
Classroom Setting	64.6%	66.2%	66.0%	67.7%	67.2%	67.3%	
<b>RETENTION RATES</b>							
Distance Education	71.2%	72.3%	73.0%	77.6%	72.9%	74.2%	
Classroom Setting	80.3%	81.0%	83.5%	84.6%	84.7%	83.7%	

\*See Program Review Definitions page