

West Valley College REVIEW DATA		PROGRAM		Department: ANTHROPOLOGY			
				2008-2009 Academic Year Data			
Table I							
ENROLLMENT DATA							
ANTHROPOLOGY							
Department Enrollment Data:							
	Fall 2006	Spring 2007	Fall 2007	Spring 2008	Fall 2008	Spring 2009	Spring 07 to Spring 09 Change
DEPT Enrollment*	372	362	375	378	408	445	22.93%
DEPT Unduplicated headcount*	366	359	363	369	396	428	19.22%
FTEF					2.0	2.4	N/A
WSCH					1,337	1,479	N/A
FTES					41	46	N/A
WSCH/FTEF					668.6	616.3	N/A
* Enrollment is a seat count, and shows the number of warm bodies filling classes. Taken at census. ** Unduplicated count of students - a student taking several classes is counted only once. Taken at census. *** The number of full-time equivalent students enrolled. **** The number of weekly student contact hours.							
Cost Data							
College Enrollment Data:							
	Fall 2006	Spring 2007	Fall 2007	Spring 2008	Fall 2008	Spring 2009	Spring 07 to Spring 09 Change
WVC Enrollment	32,813	31,787	34,638	33,209	35,820	37,913	19.3%
WVC Unduplicated headcount	9,830	9,851	10,185	10,041	10,564	11,237	14.1%
FTEF					238	238	N/A
WSCH					153,861	163,833.7	N/A
FTES					4,107	4,007	N/A
WSCH/FTEF					558.30	545.20	N/A

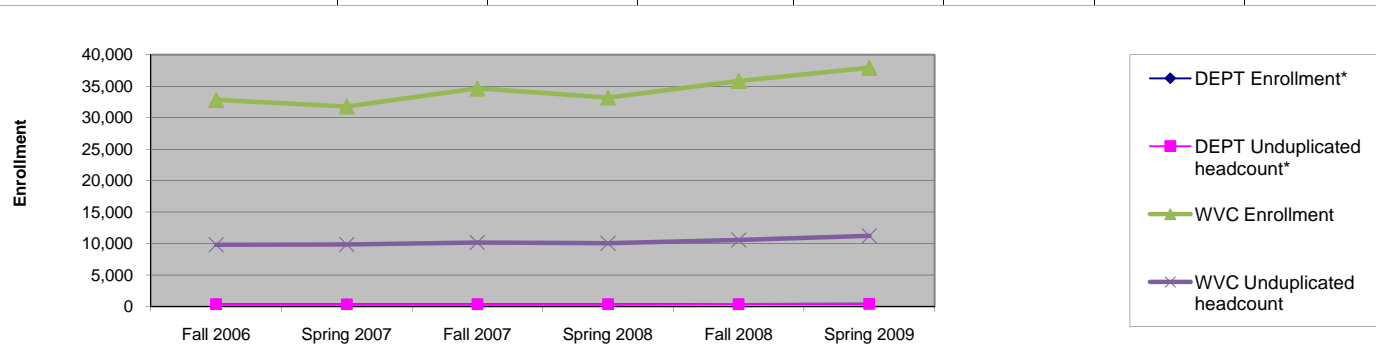


Table IIa							
DEMOGRAPHIC DATA							
ANTHROPOLOGY							
Department Ethnicity Data:							
	Fall 2006	Spring 2007	Fall 2007	Spring 2008	Fall 2008	Spring 2009	Spring 07 to Spring 09 Change
African American	2.3%	2.3%	3.2%	2.6%	2.4%	3.9%	1.6%
American Indian	1.0%	1.0%	0.9%	0.6%	1.8%	0.3%	-0.7%
Asian/Pacific Islander	9.1%	13.3%	10.1%	13.3%	16.1%	11.4%	-1.9%
Hispanic	19.2%	16.2%	18.7%	13.3%	15.5%	16.9%	0.7%
Other Non-White	2.3%	2.6%	2.2%	3.6%	0.9%	2.1%	-0.5%
White	66.1%	64.7%	64.9%	66.6%	63.3%	65.5%	0.8%
College Ethnicity Data:							
	Fall 2006	Spring 2007	Fall 2007	Spring 2008	Fall 2008	Spring 2009	Spring 07 to Spring 09 Change
African American	3.1%	3.3%	3.2%	3.0%	3.4%	3.3%	0.0%
American Indian	0.9%	0.8%	0.7%	0.9%	0.8%	0.7%	-0.1%
Asian/Pacific Islander	18.7%	19.7%	19.7%	19.5%	19.1%	19.9%	0.2%
Hispanic	17.1%	16.0%	16.7%	15.9%	16.2%	15.7%	-0.3%
Other Non-White	2.1%	2.2%	2.0%	2.3%	2.3%	2.3%	0.1%
White	58.1%	57.9%	57.5%	58.4%	58.2%	58.0%	0.1%
Spring 2009 Comparison of Student Enrollment by Ethnicity							
	Department	College					
African American	3.9%	3.30%					
American Indian	0.3%	0.70%					
Asian/Pacific Islander	11.4%	19.90%					
Hispanic	16.9%	15.70%					
Other Non-White	2.1%	2.30%					
White	65.5%	58.00%					

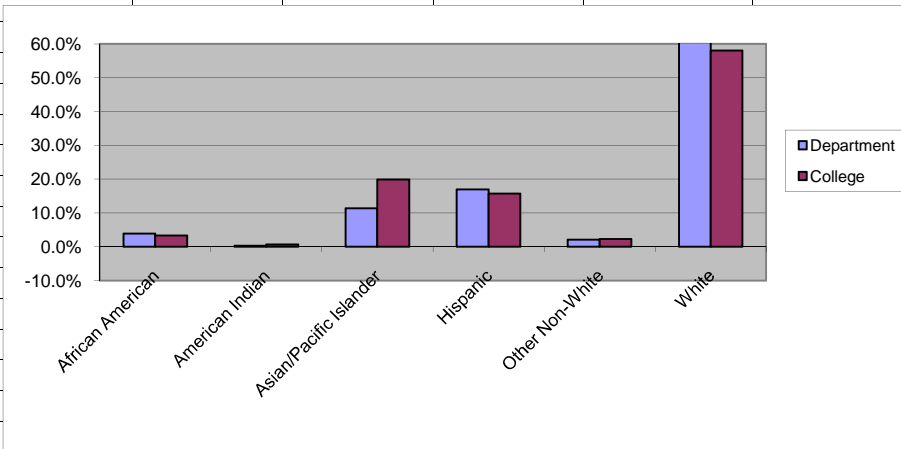


Table IIc							
Department Age Data:							
	Fall 2006	Spring 2007	Fall 2007	Spring 2008	Fall 2008	Spring 2009	Spring 07 to Spring 09 Change
< 21	61.3%	65.8%	59.2%	62.6%	65.6%	66.0%	0.2%
21 - 25	28.1%	26.5%	28.6%	27.2%	24.7%	25.0%	-1.5%
26 - 30	4.7%	4.2%	6.1%	3.6%	3.1%	4.6%	0.4%
31 - 40	2.8%	2.5%	3.1%	2.7%	2.3%	2.1%	-0.4%
41 - 50	2.8%	1.7%	1.4%	2.5%	3.1%	1.9%	0.2%
51 - 60	0.3%	0.3%	0.8%	0.8%	1.0%	0.0%	-0.3%
> 60	0.0%	0.0%	0.8%	0.5%	0.3%	0.5%	0.5%
College Age Data:							
	Fall 2006	Spring 2007	Fall 2007	Spring 2008	Fall 2008	Spring 2009	Spring 07 to Spring 09 Change
< 21	39.0%	35.9%	38.4%	35.1%	37.3%	34.6%	-1.3%
21 - 25	21.3%	22.7%	22.2%	23.7%	23.2%	24.4%	3.1%
26 - 30	7.8%	8.6%	8.4%	9.2%	8.8%	9.8%	2.0%
31 - 40	10.5%	11.1%	10.5%	10.9%	10.4%	10.5%	0.0%
41 - 50	11.9%	11.7%	11.1%	11.1%	10.8%	10.9%	-1.0%
51 - 60	6.1%	6.6%	6.2%	6.6%	6.1%	6.7%	0.6%
> 60	3.3%	3.5%	3.3%	3.5%	3.3%	3.2%	-0.1%
Spring 2009 Comparison of Student Enrollment by Age							
	Department	College					
< 21	66.0%	34.6%					
21 - 25	25.0%	24.4%					
26 - 30	4.6%	9.8%					
31 - 40	2.1%	10.5%					
41 - 50	1.9%	10.9%					
51 - 60	0.0%	6.7%					
> 60	0.5%	3.2%					

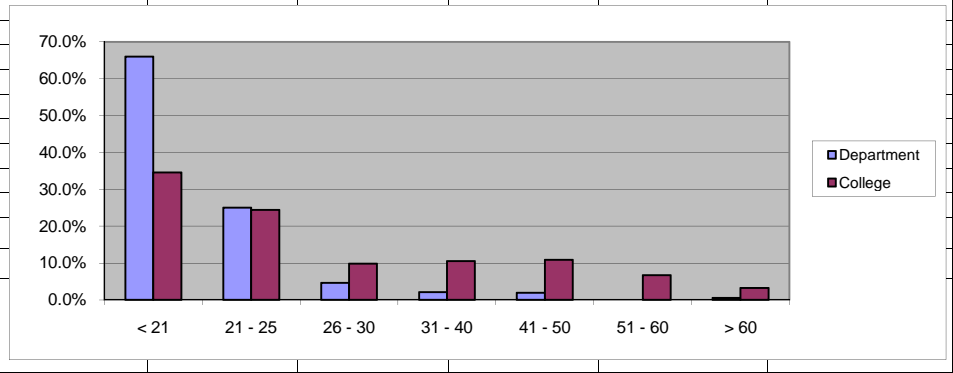
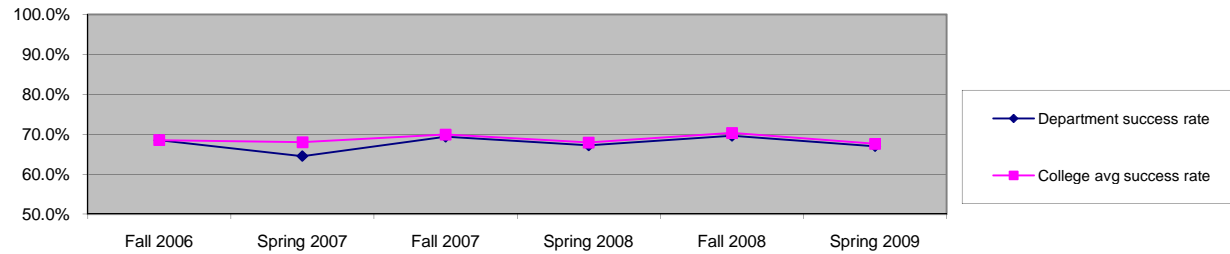


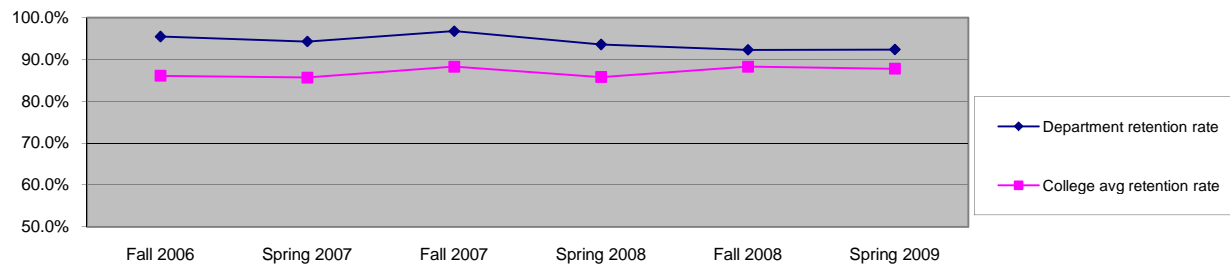
Table III

PERFORMANCE DATA

ANTHROPOLOGY	Fall 2006	Spring 2007	Fall 2007	Spring 2008	Fall 2008	Spring 2009	Spring 07 to Spring 09 Change
Department success rate	68.5%	64.5%	69.4%	67.2%	69.6%	67.0%	2.5%
College avg success rate	68.5%	68.0%	69.9%	67.9%	70.3%	67.6%	-0.4%



ANTHROPOLOGY	Fall 2006	Spring 2007	Fall 2007	Spring 2008	Fall 2008	Spring 2009	Spring 07 to Spring 09 Change
Department retention rate	95.5%	94.3%	96.8%	93.6%	92.3%	92.4%	-1.9%
College avg retention rate	86.1%	85.7%	88.3%	85.8%	88.3%	87.8%	2.1%



ANTHROPOLOGY	Fall 2006	Spring 2007	Fall 2007	Spring 2008	Fall 2008	Spring 2009	Spring 07 to Spring 09 Change
Department Degrees	1	5	2	4	0	7	40.0%
Department Certificates	0	0	0	0	0	0	#DIV/0!
College Degrees	218	474	198	421	187	444	-6.3%
College Certificates	114	206	100	178	53	79	-61.7%

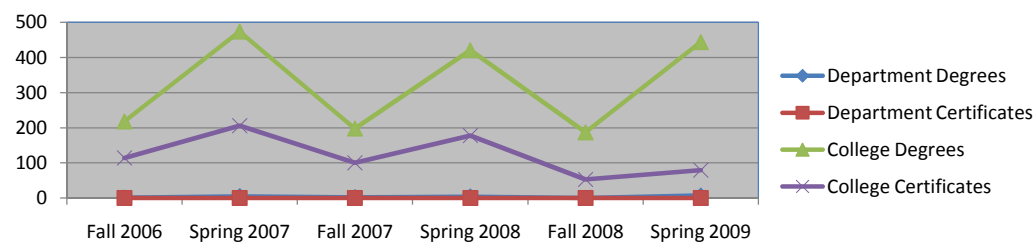


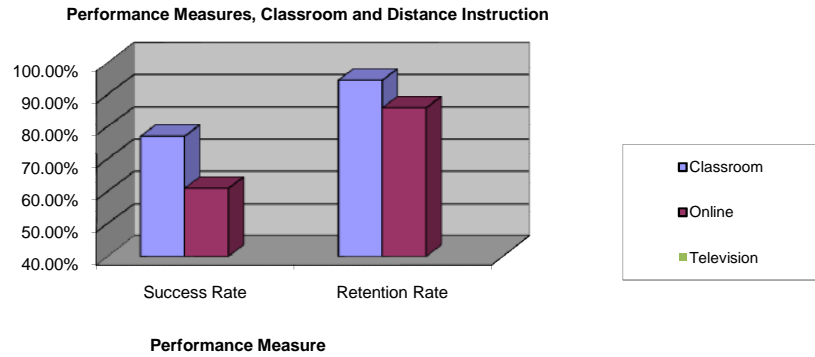
Table IV

DISTANCE EDUCATION DATA

ANTHROPOLOGY

2008-2009 Academic Year

COURSE NAME ANTHRO 003	Success Rate	Retention Rate
Classroom	76.90%	94.40%
Online	60.90%	85.90%
Television		



COURSE NAME	Success Rate	Retention Rate
Classroom (sections)		
Online (sections)		
Television (sections)		

