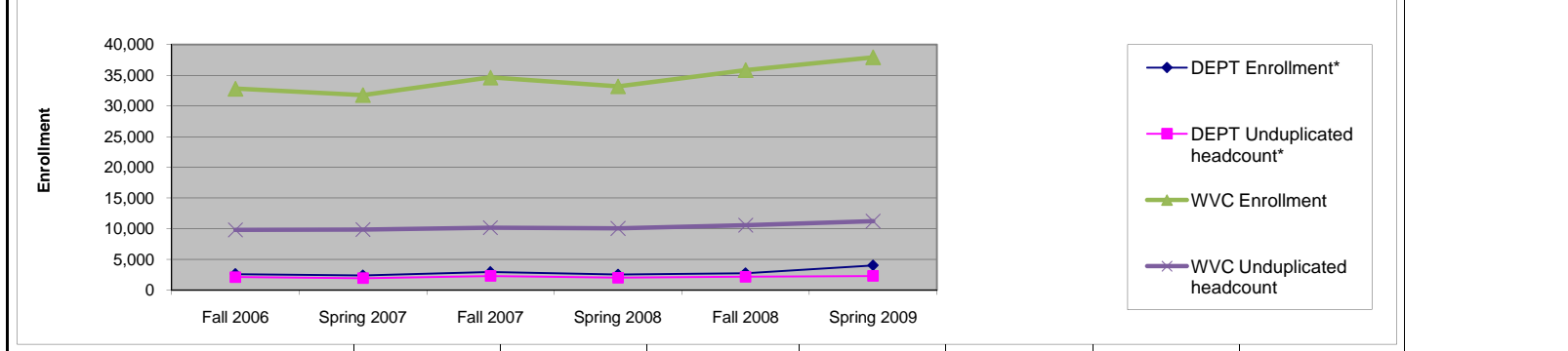


West Valley College REVIEW DATA	PROGRAM		Department: ENGLISH				
2008-2009 Academic Year Data							

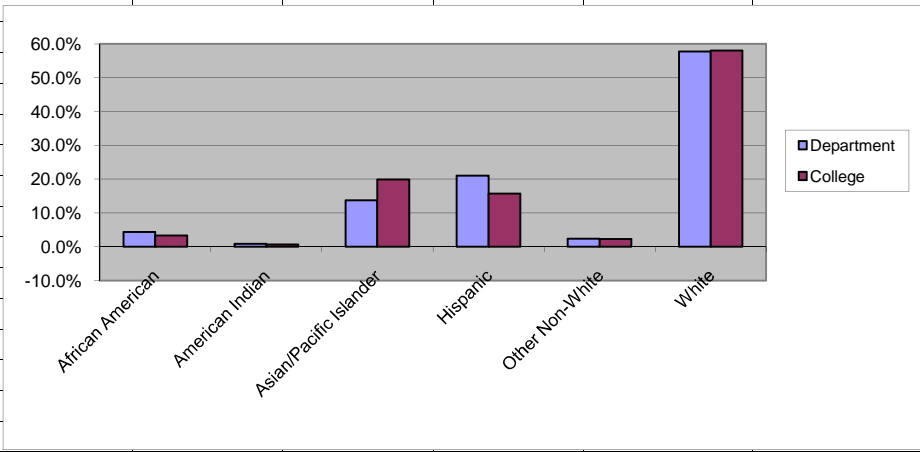
Table I							
ENROLLMENT DATA							
ENGLISH							
Department Enrollment Data:							
	Fall 2006	Spring 2007	Fall 2007	Spring 2008	Fall 2008	Spring 2009	Spring 07 to Spring 09 Change
DEPT Enrollment*	2,617	2,406	2,940	2,529	2,750	4,031	67.54%
DEPT Unduplicated headcount*	2,127	1,946	2,300	2,031	2,167	2,310	18.71%
FTEF					19.4	19.5	N/A
WSCH					15,303	14,665	N/A
FTES					358	319	N/A
WSCH/FTEF					603.7	530.2	N/A

* Enrollment is a seat count, and shows the number of warm bodies filling classes. Taken at census. ** Unduplicated count of students - a student taking several classes is counted only once. Taken at census. *** The number of full-time equivalent students enrolled. **** The number of weekly student contact hours.

Cost Data							
College Enrollment Data:							
	Fall 2006	Spring 2007	Fall 2007	Spring 2008	Fall 2008	Spring 2009	Spring 07 to Spring 09 Change
WVC Enrollment	32,813	31,787	34,638	33,209	35,820	37,913	19.3%
WVC Unduplicated headcount	9,830	9,851	10,185	10,041	10,564	11,237	14.1%
FTEF					238	238	N/A
WSCH					153,861	163,833.7	N/A
FTES					4,107	4,007	N/A
WSCH/FTEF					558.30	545.20	N/A



<i>Table IIa</i>							
DEMOGRAPHIC DATA							
ENGLISH							
Department Ethnicity Data:							
	Fall 2006	Spring 2007	Fall 2007	Spring 2008	Fall 2008	Spring 2009	Spring 07 to Spring 09 Change
African American	4.6%	4.9%	3.7%	3.8%	3.0%	4.4%	-0.5%
American Indian	0.8%	0.8%	0.8%	1.2%	0.8%	0.9%	0.1%
Asian/Pacific Islander	13.1%	14.0%	12.9%	12.9%	13.9%	13.7%	-0.3%
Hispanic	20.8%	19.8%	20.6%	19.4%	18.2%	21.0%	1.2%
Other Non-White	2.5%	2.6%	2.4%	2.9%	3.3%	2.4%	-0.2%
White	58.2%	57.9%	59.6%	59.7%	60.9%	57.7%	-0.2%
College Ethnicity Data:							
	Fall 2006	Spring 2007	Fall 2007	Spring 2008	Fall 2008	Spring 2009	Spring 07 to Spring 09 Change
African American	3.1%	3.3%	3.2%	3.0%	3.4%	3.3%	0.0%
American Indian	0.9%	0.8%	0.7%	0.9%	0.8%	0.7%	-0.1%
Asian/Pacific Islander	18.7%	19.7%	19.7%	19.5%	19.1%	19.9%	0.2%
Hispanic	17.1%	16.0%	16.7%	15.9%	16.2%	15.7%	-0.3%
Other Non-White	2.1%	2.2%	2.0%	2.3%	2.3%	2.3%	0.1%
White	58.1%	57.9%	57.5%	58.4%	58.2%	58.0%	0.1%
Spring 2009 Comparison of Student Enrollment by Ethnicity							
	Department	College					
African American	4.4%	3.30%					
American Indian	0.9%	0.70%					
Asian/Pacific Islander	13.7%	19.90%					
Hispanic	21.0%	15.70%					
Other Non-White	2.4%	2.30%					
White	57.7%	58.00%					



Department Gender Data:							
	Fall 2006	Spring 2007	Fall 2007	Spring 2008	Fall 2008	Spring 2009	Spring 07 to Spring 09 Change
Female	53.6%	51.8%	52.8%	50.8%	51.2%	48.4%	-3.4%
Male	46.4%	48.2%	47.2%	49.2%	48.8%	51.6%	3.4%

College Gender Data:							
	Fall 2006	Spring 2007	Fall 2007	Spring 2008	Fall 2008	Spring 2009	Spring 07 to Spring 09 Change
Female	59.5%	59.3%	58.6%	58.4%	57.9%	57.9%	-1.4%
Male	40.5%	40.7%	41.4%	41.6%	42.1%	42.1%	1.4%

Spring 2009 Comparison of Student Enrollment by Gender

	Department	College
Female	48.4%	57.9%
Male	51.6%	42.1%

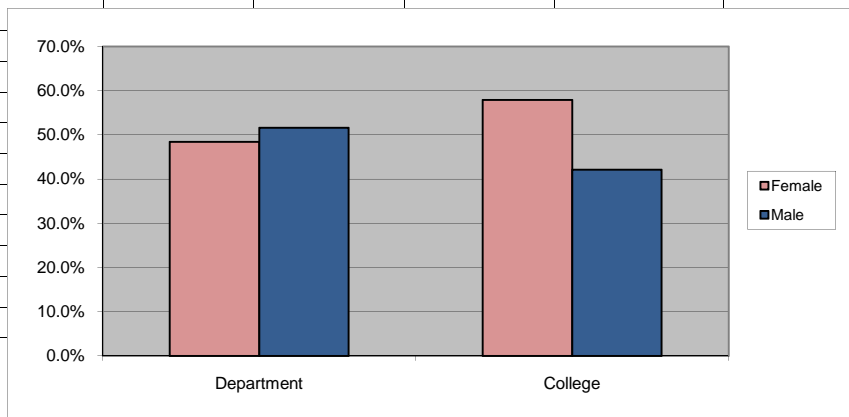


Table IIc								
Department Age Data:								
	Fall 2006	Spring 2007	Fall 2007	Spring 2008	Fall 2008	Spring 2009	Spring 07 to Spring 09 Change	
< 21	69.6%	63.5%	70.3%	61.6%	66.4%	61.4%	-2.1%	
21 - 25	18.8%	22.3%	18.0%	24.1%	21.8%	23.6%	1.3%	
26 - 30	4.2%	4.9%	4.1%	5.9%	4.7%	6.7%	1.8%	
31 - 40	3.8%	4.7%	3.8%	4.4%	3.4%	4.0%	-0.7%	
41 - 50	2.7%	3.4%	3.2%	3.0%	2.7%	3.2%	-0.2%	
51 - 60	0.8%	1.0%	0.5%	1.0%	0.8%	0.9%	-0.1%	
> 60	0.1%	0.3%	0.1%	0.1%	0.2%	0.2%	-0.1%	
College Age Data:								
	Fall 2006	Spring 2007	Fall 2007	Spring 2008	Fall 2008	Spring 2009	Spring 07 to Spring 09 Change	
< 21	39.0%	35.9%	38.4%	35.1%	37.3%	34.6%	-1.3%	
21 - 25	21.3%	22.7%	22.2%	23.7%	23.2%	24.4%	3.1%	
26 - 30	7.8%	8.6%	8.4%	9.2%	8.8%	9.8%	2.0%	
31 - 40	10.5%	11.1%	10.5%	10.9%	10.4%	10.5%	0.0%	
41 - 50	11.9%	11.7%	11.1%	11.1%	10.8%	10.9%	-1.0%	
51 - 60	6.1%	6.6%	6.2%	6.6%	6.1%	6.7%	0.6%	
> 60	3.3%	3.5%	3.3%	3.5%	3.3%	3.2%	-0.1%	
Spring 2009 Comparison of Student Enrollment by Age								
	Department	College						
< 21	61.4%	34.6%						
21 - 25	23.6%	24.4%						
26 - 30	6.7%	9.8%						
31 - 40	4.0%	10.5%						
41 - 50	3.2%	10.9%						
51 - 60	0.9%	6.7%						
> 60	0.2%	3.2%						

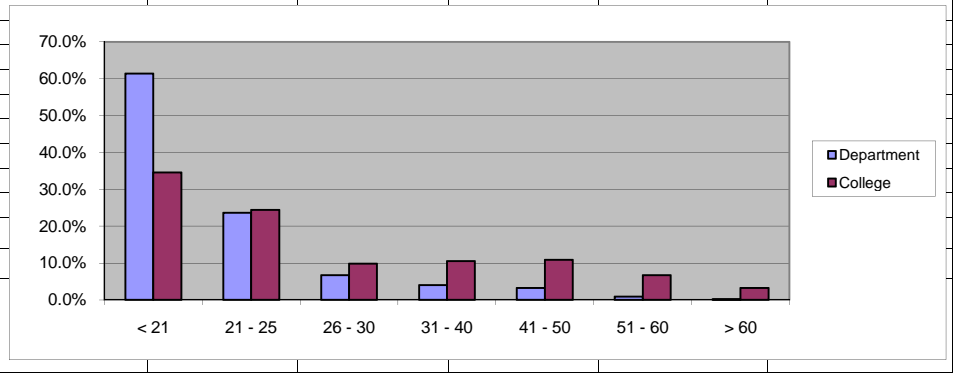
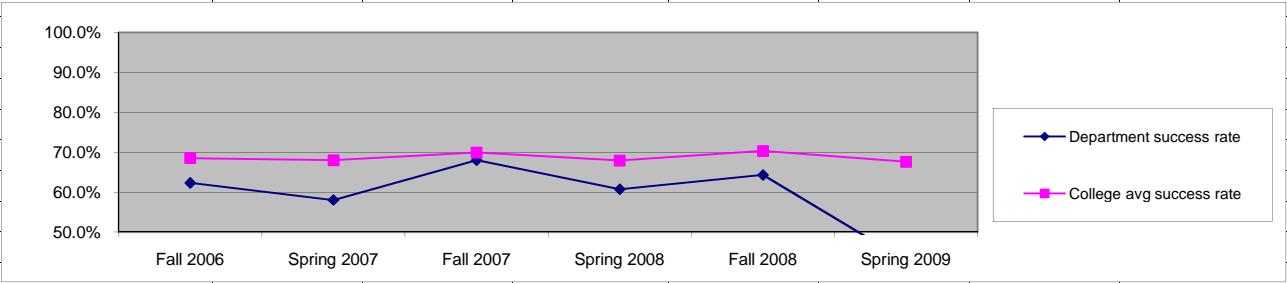
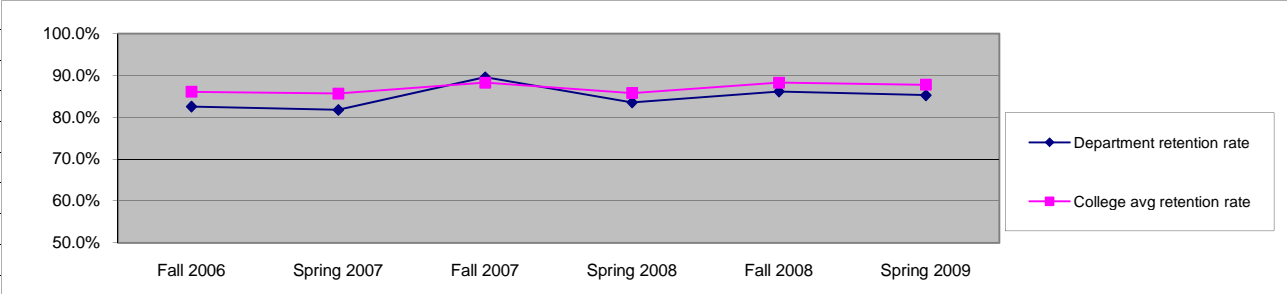


Table III							
PERFORMANCE DATA							
ENGLISH	Fall 2006	Spring 2007	Fall 2007	Spring 2008	Fall 2008	Spring 2009	Spring 07 to Spring 09 Change
Department success rate	62.3%	58.0%	68.0%	60.7%	64.3%	42.9%	-15.1%
College avg success rate	68.5%	68.0%	69.9%	67.9%	70.3%	67.6%	-0.4%



ENGLISH	Fall 2006	Spring 2007	Fall 2007	Spring 2008	Fall 2008	Spring 2009	Spring 07 to Spring 09 Change
Department retention rate	82.6%	81.8%	89.6%	83.6%	86.2%	85.3%	3.5%
College avg retention rate	86.1%	85.7%	88.3%	85.8%	88.3%	87.8%	2.1%



ENGLISH	Fall 2006	Spring 2007	Fall 2007	Spring 2008	Fall 2008	Spring 2009	Spring 07 to Spring 09 Change
Department Degrees	1	1	0	4	1	6	500.0%
Department Certificates	0	0	0	0	0	0	#DIV/0!
College Degrees	218	474	198	421	187	444	-6.3%
College Certificates	114	206	100	178	53	79	-61.7%

